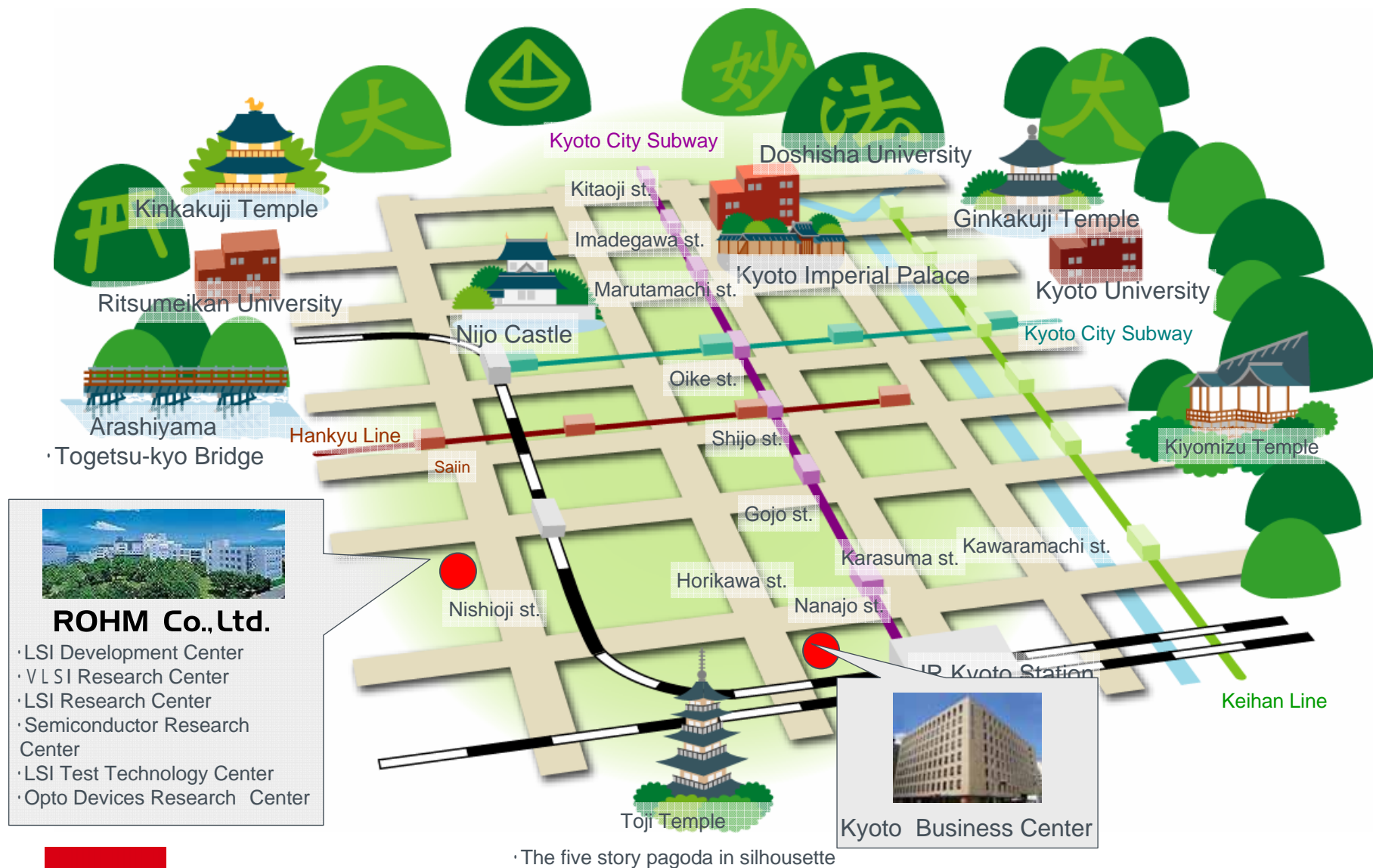




# Company Profile

Jan 23, 2009

# ROHM in Kyoto: The City of Culture



# Introduction of New Company Brand Mark

Rohm became 50 years old on September 17, 2008.

Rohm started as a venture company specialized in small resistors in 1954. Four years later in 1958, Rohm was officially registered as “Toyo Electronics Industry Co., Ltd.”. In 1967, Rohm started to develop semiconductor products, which is the main products of Rohm today. Although majority of the sales revenue of Rohm today is from Semiconductors, Rohm maintains manufacturing expertise which has been accumulated ever since Rohm started as a resistor manufacturer. In order for everyone to keep this history in mind, Rohm Brand name is changing to “ROHM SEMICONDUCTOR”, and we introduced “Venture Red” color on our new Logo to remind everyone our original “Venture Spirit”.

## History of Rohm Brand Mark



**Rohm**  
QUALITY · RELIABILITY

1958 through 1979

Combination of the initial of “Resistor”, “R” and its electrical parameter unit “ohm: ”

Excellence in Electronics



**ROHM**

1979 through 2008

As a general electrical component manufacturer, the company name became “ROHM”, and the new company logo has been used for the next 30 years until today.



2009 and onwards

As a “Semiconductor” manufacturer that also produces Resistors(ROHM), the company logo is changing to ROHM Semiconductor



**ROHM**  
SEMICONDUCTOR

© 2009 ROHM Co.,Ltd. All Rights Reserved

**ROHM Co.,Ltd.**

# Merger with Oki Semiconductor

**Oki Semiconductor became a part of ROHM Group effective October 1, 2008.**

On October 1, 2008, ROHM acquired 95% of published stock share of the Semiconductor Business Unit of Oki Electric Co., Ltd., which became a new company named “OKI Semiconductor”, a solely owned subsidiary of ROHM Co., Ltd.

**OKI**  
OKI SEMICONDUCTOR



## < Respecting strength of each company >

We will provide our customers with more attractive solutions:

- We are determined to provide our customers with more aggressive contribution by integrating Oki's expertise with Rohm's expertise;
- Solution proposal on original technologies or LSIs by combining Oki's technologies in infrastructure communication LSIs, wireless communication technologies, automotive electrical know-hows, and ultra low power consumption SOI technologies with Rohm's cutting edge manufacturing technologies.
  - Value added system solution proposals by integrating Rohm's rich product lineup with Oki's system technologies.

From customer support point of view, we will reinforce our sales force by maximizing the usage of sales, technology, and quality assurance networks of each company throughout the world.



**ROHM**  
SEMICONDUCTOR

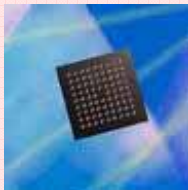
© 2009 ROHM Co.,Ltd. All Rights Reserved

**ROHM Co.,Ltd.**

# Product Lineup

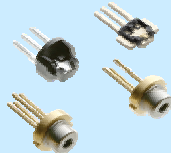
## ICs

- System ICs
- General Purpose ICs

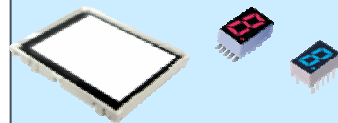


## Optoelectronics

- Laser Diodes
- LEDs
- LED Displays
- Sensors

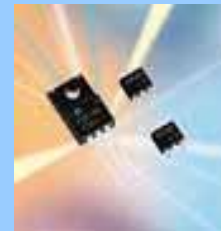
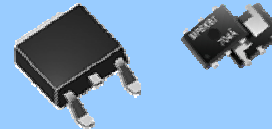


PICOLED™



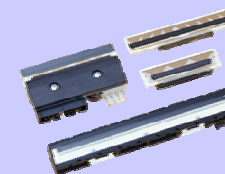
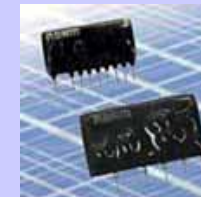
## Discretes · Passives

- MOSFETs, TRs
- Diodes
- Resistors
- Tantalum Caps.



## Modules

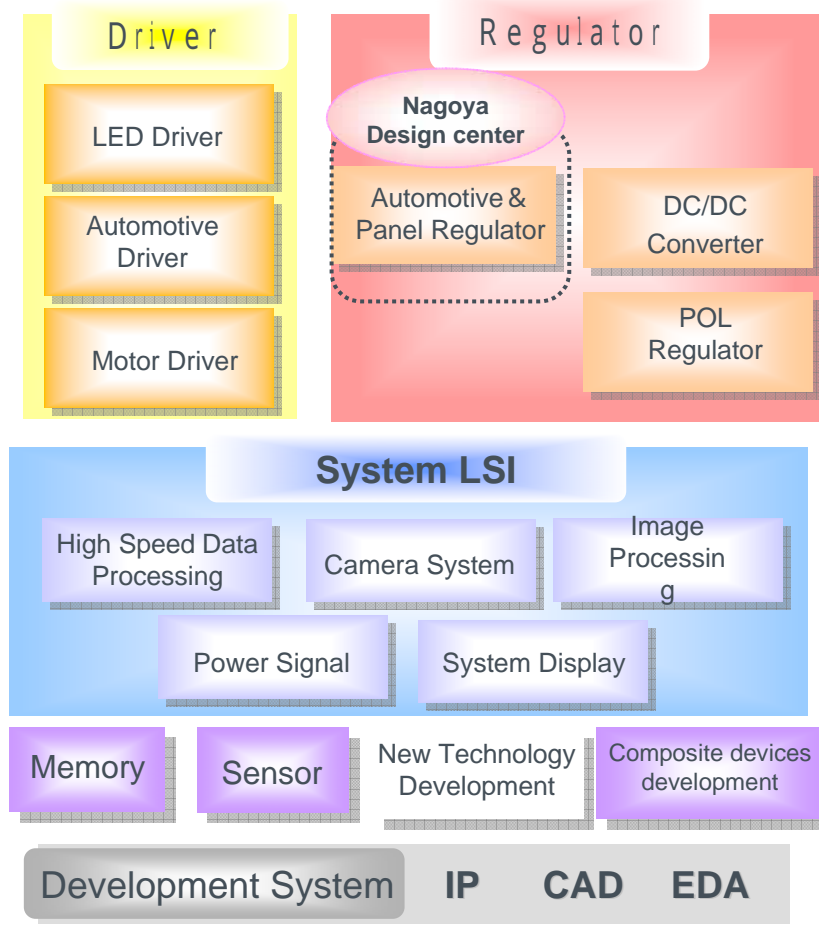
- Power Modules
- Remote Control Receiver Modules
- IrDA Modules
- Contact Image Sensor Heads
- Print heads



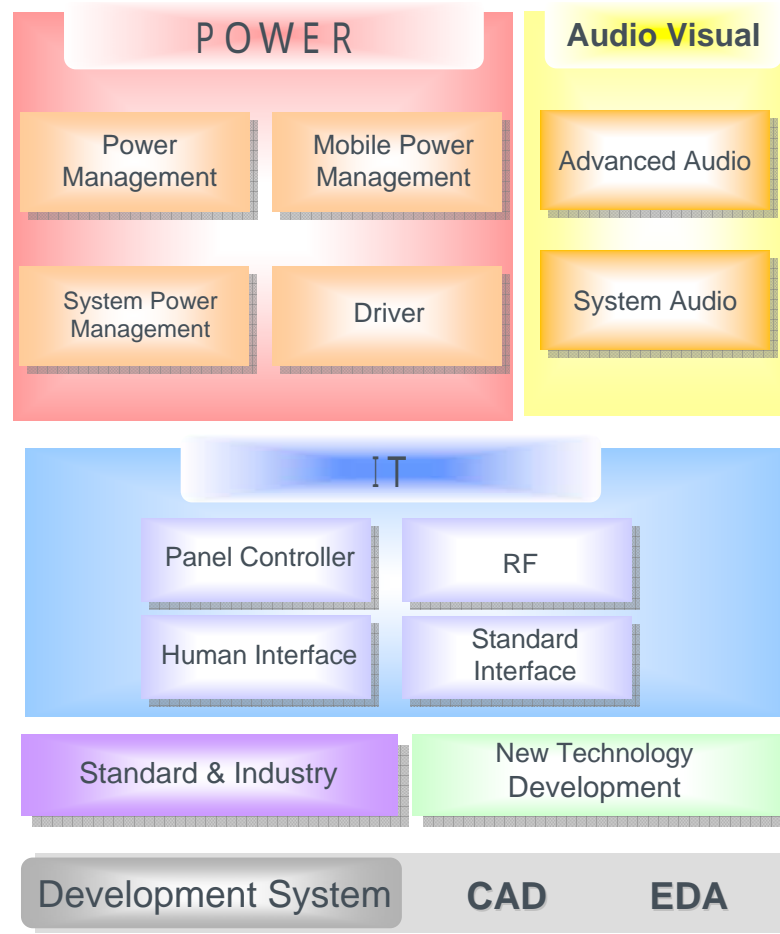
# LSI Development Headquarters

**Our goal is to provide each customer an ideal solution by meeting their market needs through the most advanced production and production system.**

**KTC LSI Product Development HQ (Kyoto Head Office)**



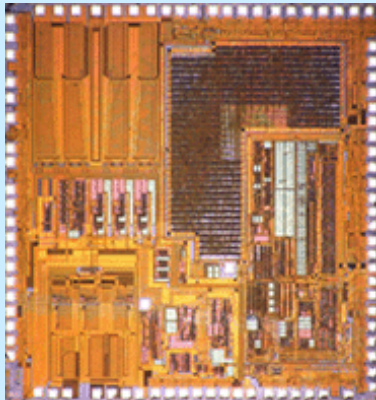
**YTC LSI Product Development HQ (Shin-yokohama)**





# ROHM Wafer Fabrication to Realize Various Kinds of Designs.

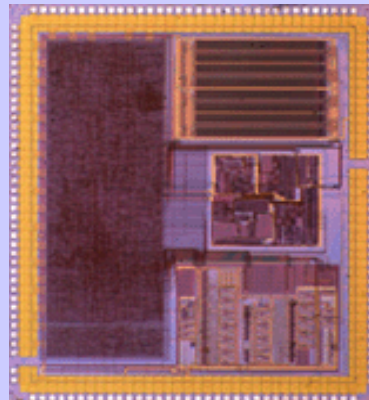
## [BiC-DMOS]



### Storage All in One Chip

- Control Logic
- R/W AMP
- Semiconductors Filter
- Motor Driver

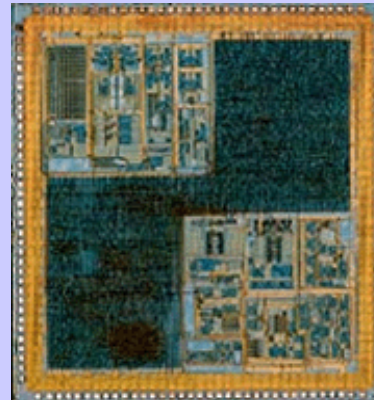
## [CMOS]



### CD-ROM DSP Servo Chip

- DSP
- Synchronus SRAM
- Linear CMOS
- Logic

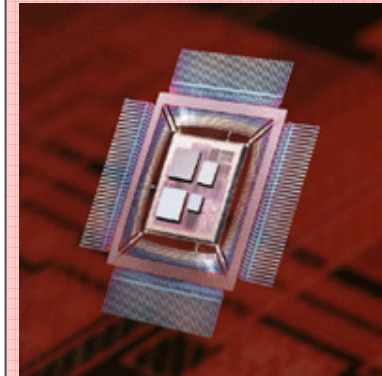
## [CMOS]



### Mobile Phone Baseband

- ARM CPU
- Teak DSP
- CODEC
- Linear CMOS

## [REAL SOCKET]



### Any Chips Integrated Design

- Bipolar
- CMOS
- Non-volatile Memory
- Power

# The Advanced VLSI Wafer Fab.

## The Cutting-edge Fine Geometry Processes



**VLSI Research Center  
(Kyoto Head Office)**

Class 1 super clean room at the  
VLSI Research Center in Kyoto.



**ROHM HAMAMATSU  
CO.,LTD.**

The leading edge VLSI Wafer Fab.-300mm Wafer processes  
-90nm Design rule   - 65nm Design rule

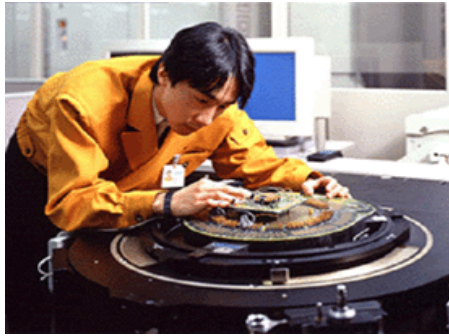


Automated Transfer  
System



# In-house Production Technologies

Equipment developed in-house  
enable flexible production



Most production equipment  
designed and fabricated internally



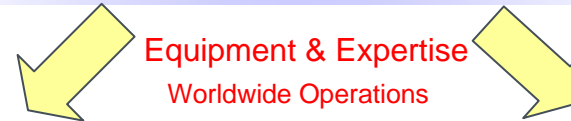
In-house Equipment  
(Wire bonding phase)

Common production systems are utilized  
worldwide, resulting in stable, high quality supply

Example: IC Production



Process Support Facilities  
ROHM Fukuoka



Large Scale Assembly Facility



ROHM Integrated Systems (Thailand)

Large Scale Assembly Facility



ROHM Electronics Philippines

Similar production facilities are used to manufacture modules, discrete semiconductors, and passive components

# Quality and Environmental Awards



TOYOTA



Delphi



BOSCH



Motorola



SONY



Panasonic



TOSHIBA



Fujitsu Ten



Intermec



Fujitsu



Motorola



Delphi



Zebra



SONY