

Aging in Place with ICT

Project Director : Akiko Ogawa

professor, Iwate Prefectural University

Project goals

Problems to be solved

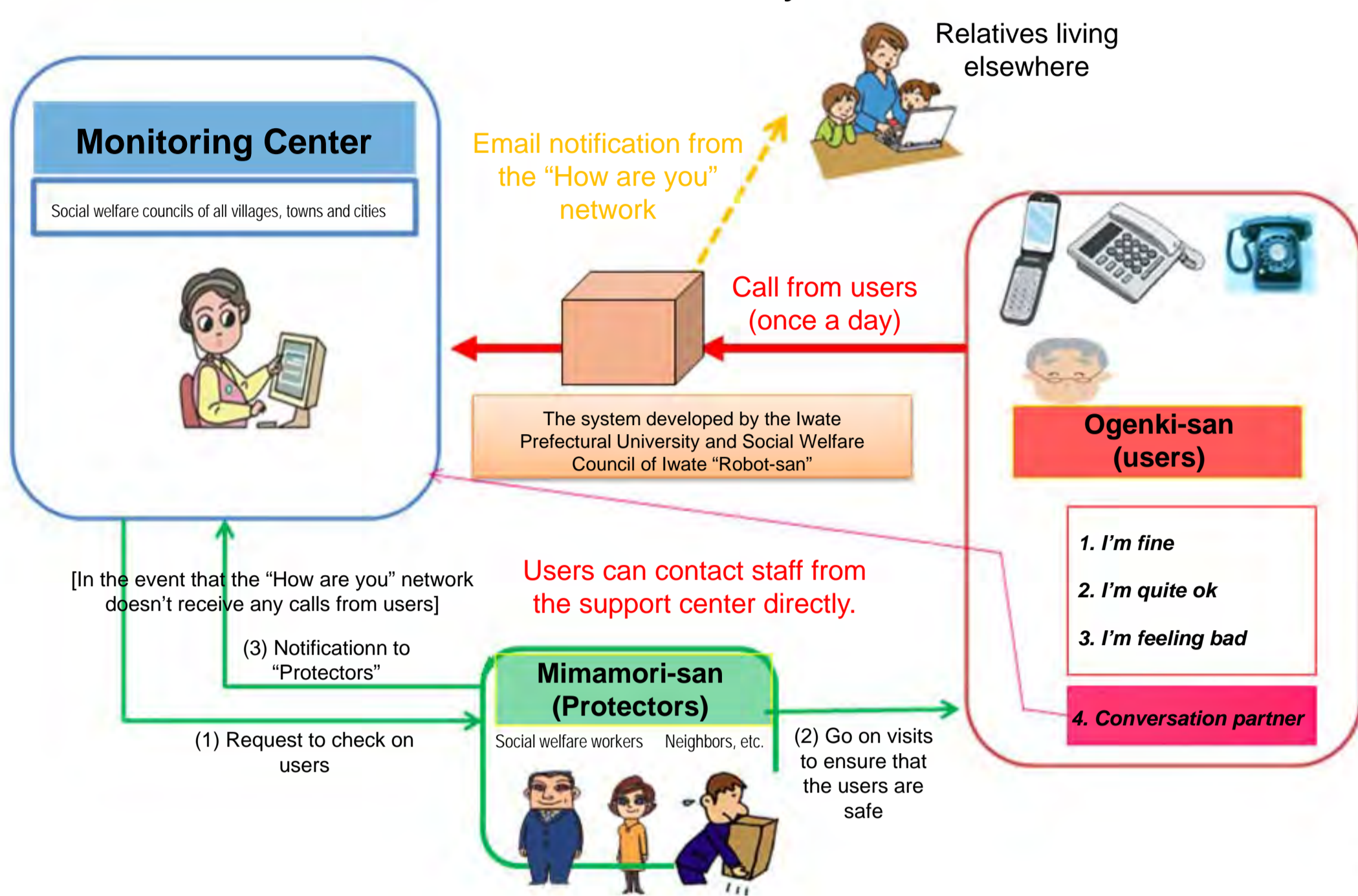
- The increasing incidence of senior citizens who grow old in solitude
 - The weakening of support networks
- Solitary deaths and suicides are on the rise due to the lack of networks to support the elderly in their daily lives (especially so in Iwate Prefecture since population density is low and Iwate's large population of elderly do not wish to trouble others)

Project implementation

Project overview

The structure of "How are you" network

The second trial run of the "How are you" network in Iwate Prefecture



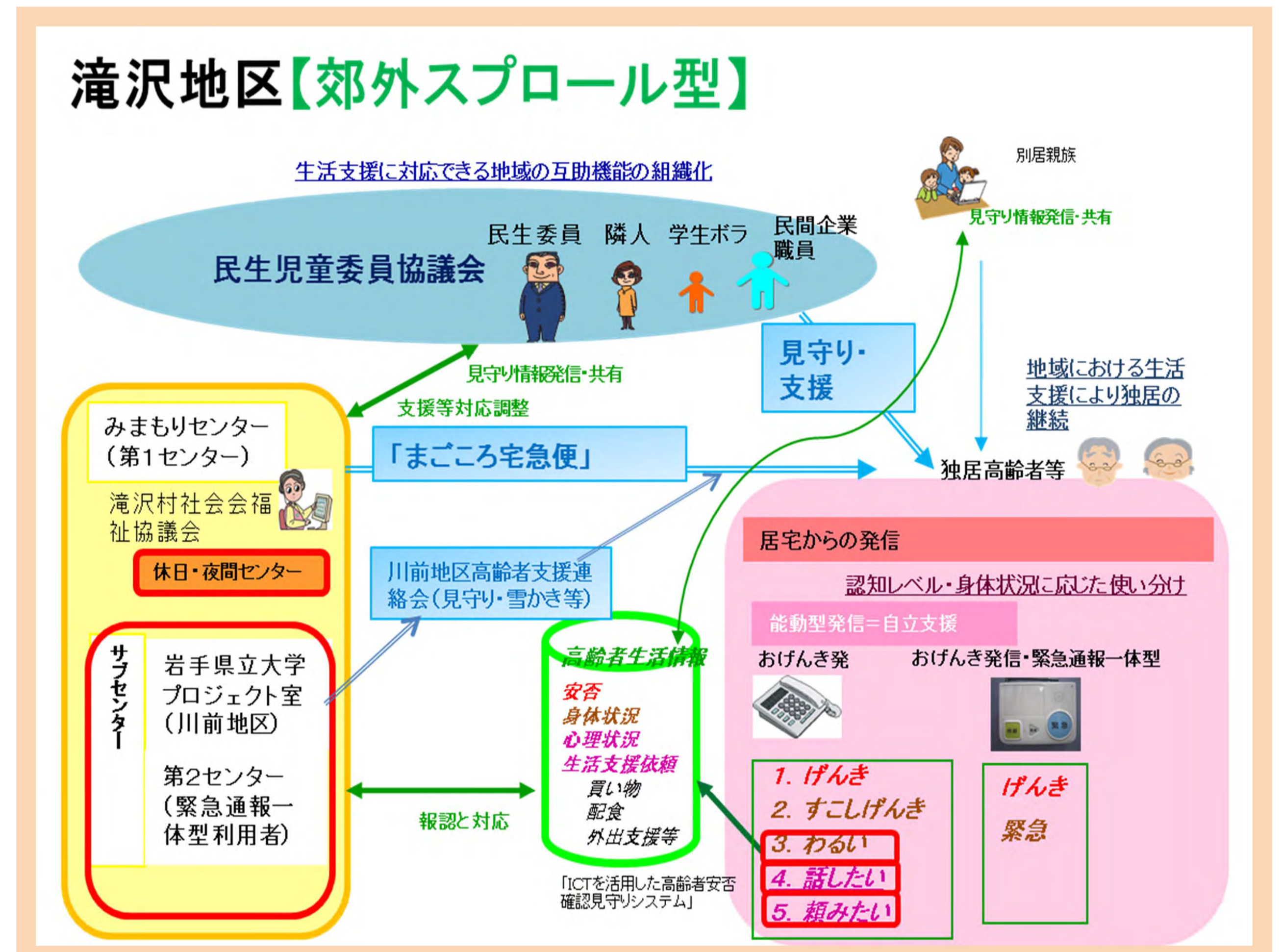
→ "4. Conversation partner"
Telephone service will be made available 24 hours all year round

Senior citizens who utilize this service are called "Ogenki-san" and they call the system once every morning to report on their health status (They will be speaking to a robot)

The elderly won't hold back their responses

They naturally become adept at using the "How are you" system

Customization that considers resources availability in regions



Target community

Iwate Prefecture Morioka City (Sakuragi and Matsuzono areas), Takizawa Village (Initial Plan), Miyako City (Kawai area)

A community tailored to meet the needs of each region

(Support details and organizational structure)

- (1) Downtown model (2) New town model (3) Urban sprawl model (4) Depopulation and ageing population model



Kawamae Senior Citizen Support Association
"Helping each other through the exchange of information on daily life"
⇒ Creation of a support network in regional areas



Sincerity in Delivery
"Magokoro Takkyubin"
"Confirmation of well-being via delivery services"

Project achievements and future prospects

Project achievements

1. The creation of a support community and monitoring center that is tailored to the availability of regional resources
2. The establishment of a monitoring system using ICT which provides differentiated supports according to bodily and cognitive functions of users
3. Diversification or centralization of devices

- This research project will continue research on all fields:
- 2014 The Reconstruction Agency selected "A New Tohoku Model"
- 2015 Qualcomm sponsored "A stratified monitoring research program for Kamaishi City, Hirata area"
- 2014/2015 Cooperation between Ikaga PJ (Kochi Prefecture Yusuara Town) and Sato PJ (Fukushima Prefecture Namie Town) to use available resources in the region to create the "How are you" system
- 2015 The civilian contractor "Magonote" conducts the "Backscratcher (magonote) at home" program for its registered members
- "How are you" application to be distributed nationwide by NTT Docomo

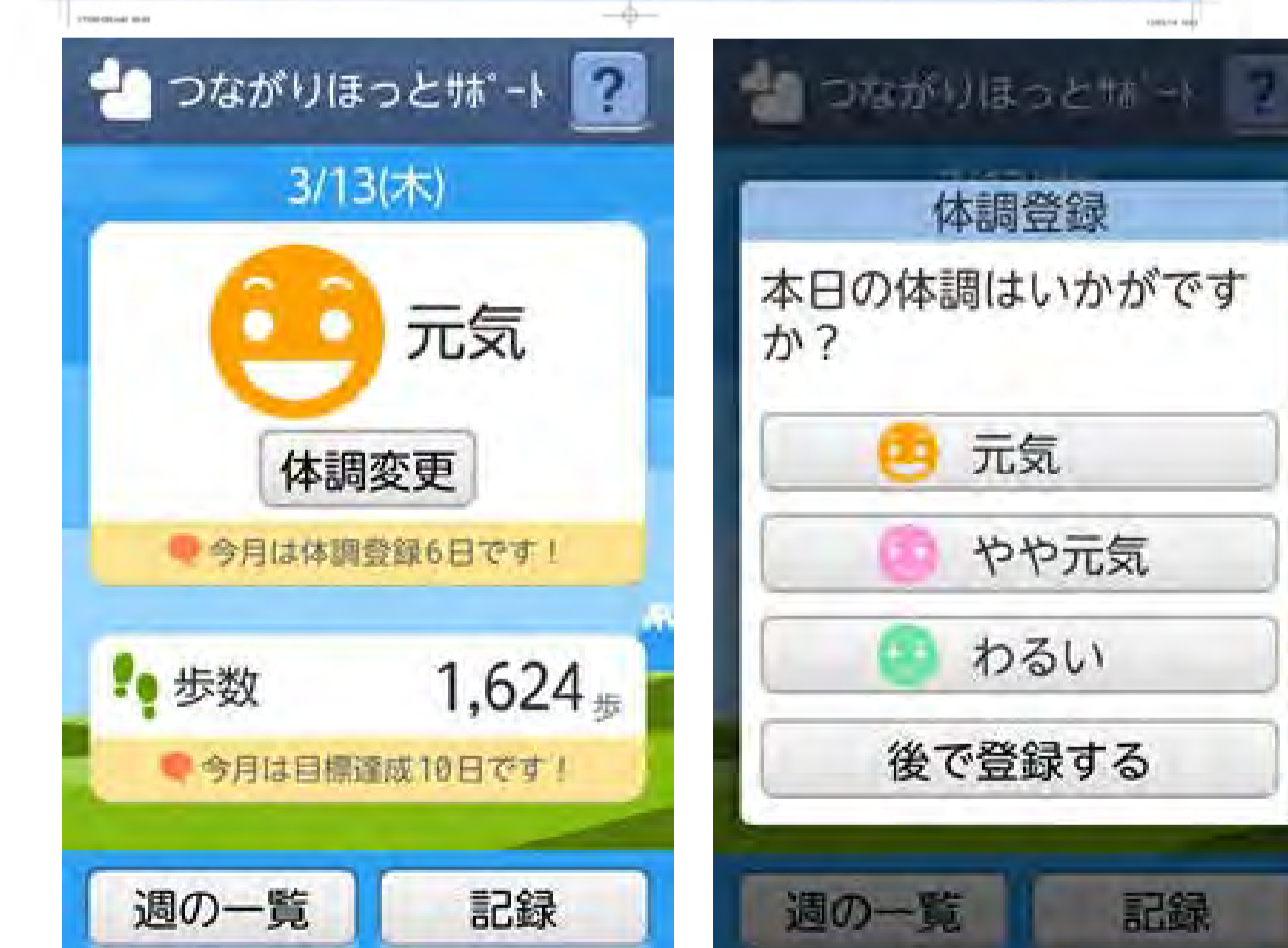
Future developments and prospects

To build a regional care system that is inclusive and towards the rebirth of provincial areas

A regional, stratified monitoring system to provide differentiated supports according to bodily and cognitive functions of the elderly, and a system that allows residents and businesses of provincial areas to work together on a monitoring network becomes possible.



A page from a textbook meant for 5th graders (Used for 5 years, and usage started in 2015)
Tokyo Shoseki Co. "Society brought about by the advent of IT"



A joint collaboration with NTT Docomo to provide the "Raku-Raku (easy-easy) PHONE basic 3"
An application called "Tsunagari-hotto-support (Connections to make you feel at ease)" was released on March 2014.

