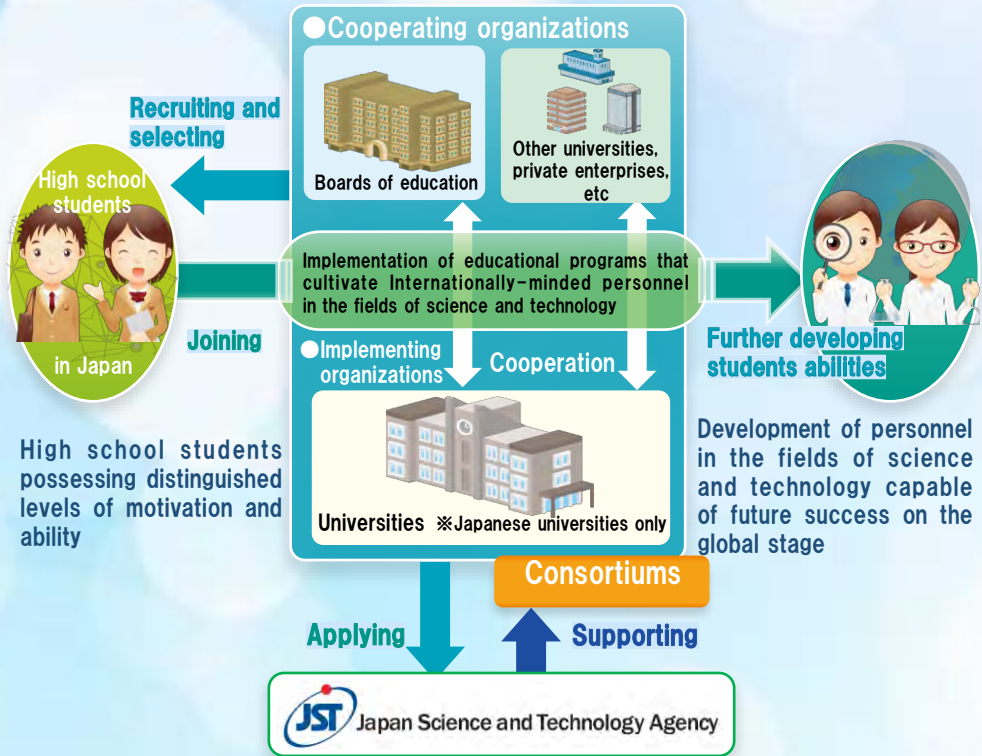


JST-GSC GLOBAL SCIENCE CAMPUS



Purpose

The Japan Science and Technology Agency (JST) provides support for projects in which universities develop advanced, systematic, educational programs in science that include international activities and allow students to attend these educational programs by recruiting and selecting high school students possessing distinguished levels of motivation and ability from the local areas around each university with the aim of cultivating science and technology human resources that are capable of future success on the global stage. These educational programs are required to incorporate personalized initiatives for developing talents as well as initiatives to improve and cultivate students (or auditors) in line with their diverse natures.

When implementing these projects, universities shall work as local centers for education and improvement to cultivate students' talents in cooperation with the entire local community by organizing consortiums in association with regional and prefectural boards of education, a city designated by ordinance boards of education, other universities, private enterprises, etc.

- ★Cultivation by universities of local high school students
- ★Development of personnel in the fields of science and technology capable of future success on the global stage

Characteristics and Requirements

- ▶Each year, universities shall recruit 40~130 high school students to attend. (Primary screening) Universities shall seek to uncover human resources in line with the ideal type of human resources that the university wishes to cultivate by establishing a unique set of selection standards.
- ▶In order to develop capable personnel in the fields of science and technology, universities shall implement commonly-shared initiatives targeting large numbers of students as well as initiatives for developing talents in line with students' personal characteristics while keeping in mind the goals of engendering diversified outlooks and bestowing an international mindset.
- ▶Universities shall further select a number of students from among the attending students (secondary screening) and conduct activities with a focus on research.
- ▶Universities shall appropriately ascertain the extent to which students have improved in ability by establishing evaluation criteria corresponding with the ideal type of human resources that the university wishes to cultivate. Universities shall utilize this information in follow-up guidance and project improvement.
- ▶Parameters shall include papers published in international journals, researches presentations at international conferences, participations in international science and technology contests, etc.
- ▶Projects shall be centrally managed by the university headquarters to enable active participation by the individuals responsible for implementation (such as the university president) and implementation within a comprehensive system of cooperation involving the entire university.
- ▶Universities shall promote projects that integrate multiple different fields and utilize the unique characteristics of the local area.

The public-private collaborative program for the development of "Experts in Information Science" purpose

This is a program for developing top-level IT human resources, targeted at senior high school students who have been commended in the Olympiad in Informatics and other competitions.

Organizations implementing Global Science Campus (GSC) and a list of projects

Applied organizations as of 2022

Keio University	One step towards medicine / medical care : Effort changes even destiny
Shizuoka University	Future Scientists' School
SHIMANE UNIVERSITY	Let's jump into the world from Shimane : Let's cause a breakthrough !
UNIVERSITY OF THE RYUKYUS	Science Education Academy of the Ryukyus for the Challengers (SEARCH)

Applied organizations as of 2021

NAGOYA UNIVERSITY	Nagoya University Mirai Global Science Campus
KOBE UNIVERSITY	Research-Oriented On-site Training Program for young scientists to go beyond the boundaries (ROOT)

Applied organizations as of 2020

CHIBA UNIVERSITY	Advancing the Society5.0 by coordination of ENGINE talent promoting program "Ascent" ~ Fostering Science & Technology leaders who have the ability of design thinking and data science to create the future world. ~
KANAZAWA UNIVERSITY	Fostering future innovative researchers for future human society

Applied organizations as of 2019

UTSUNOMIYA UNIVERSITY	iP-U : incubation Program for innovative students at Utsunomiya University
THE UNIVERSITY OF TOKYO	Creating Innovation : Education Program for the Next Generation of Global Scientists and Engineers
HIROSHIMA UNIVERSITY	GSC Hiroshima,STEM Student Development Consortium for Sustainable Development

The public-private collaborative program for the development of "Experts in Information Science"

National Institute of Informatics	From epsilon to infinite- Establishing elite training system
-----------------------------------	--

Finished organizations

HOKKAIDO UNIVERSITY	Super Scientist Program (SPP)
TOHOKU UNIVERSITY	Exploring-Germination-and-Growth Program for young Scientists (EGGS)
University of Tsukuba	Global Future Expert Science and Technology (GFEST)
UTSUNOMIYA UNIVERSITY	incubation Program for innovative students at Utsunomiya University (iP-U)
Saitama University	High-grade Global Education Program for Sciences (HiGEPS)
TOKYO UNIVERSITY OF SCIENCE	Global Science Campus
Keio University	Learning medicine and medical science in multidisciplinary fields with the spirit of Hangaku-hankyo; Learning while Teaching, Teaching while Learning
Tokyo University of Agriculture and Technology	Global Innovation Program for Young Scientists and Engineers (GYISE)
KANAZAWA UNIVERSITY	Kanazawa University Global Science Campus
Shizuoka University	Future Scientists' School (FSS)
NAGOYA UNIVERSITY	Nagoya University MIRAI global science campus
KYOTO UNIVERSITY	Experience-based Learning Course for Advanced Science (ELCAS)
OSAKA UNIVERSITY	Sekai-tekiyuku Enhanced Education for Distinguished Students (SEEDS)
KOBE UNIVERSITY	Research-Oriented On-site Training Program for innovative scientists in the future (ROOT) Joint organizations; KWANSEI GAKUIN UNIVERSITY, UNIVERSITY OF HYOGO, KONAN UNIVERSITY
OKAYAMA UNIVERSITY	Global Science Campus in Okayama (GSCO)
HIROSHIMA UNIVERSITY	Global Science Campus
EHIME UNIVERSITY	Programs for Learning Scientific Knowledge and Global Mind
KYUSHU UNIVERSITY	Future Creations in Science Project (FC-SP)
UNIVERSITY OF THE RYUKYUS	Ryudai Science Education Academy