

MALAYSIA SCIENCE AND TECHNOLOGY INFORMATION CENTRE (MASTIC)

# KRSTE.my, Knowledge Management System and National Scientific Facilities & Equipment (NSFE)

ASEAN – Japan Joint Workshop on  
“The current situation and challenges concerning the development of research environments for advance research equipment, etc between Japan and ASEAN countries”

24 February 2023  
Suriati Mokhlis

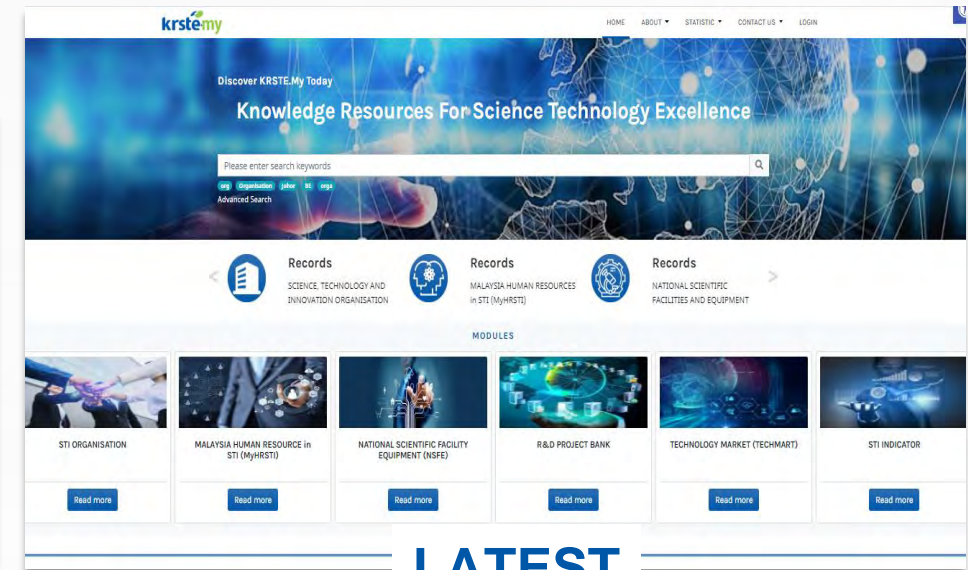
# ABOUT



Knowledge Resource For  
Science Technology  
Excellence



OLD VERSION



LATEST

2005: Release Phase  
(RP) 1,2 & 3 of  
KRSTE.my  
2009: RP 4 & 5 of  
KRSTE.my  
2020: KRSTE.my 2.0



Single Point Access  
Facilities  
(SPAF)



Collaborative  
knowledge  
management and  
learning services  
platform for STI



Access free STI  
information via  
<https://krste.my>



# LANDING PAGE KNOWLEDGE RESOURCES FOR SCIENCE AND TECHNOLOGY EXCELLENCE (KRSTE.my)

**krste.my** HOME ABOUT STATISTIC CONTACT US LOGIN

Discover KRSTE.my Today

## Knowledge Resource For Science Technology Excellence

Please enter search keywords

Search

18277 Records  
R&D PROJECT BANK

1316 Records  
TECHNOLOGY MARKET (TECHMART)

165 Records  
SCIENCE, TECHNOLOGY AND INNOVATION INDICATOR

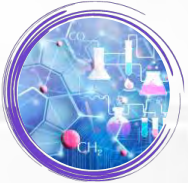
### MODULES

- STI ORGANISATION
- MALAYSIAN HUMAN RESOURCE in STI (MyHRSTI)
- NATIONAL SCIENTIFIC FACILITY EQUIPMENT (NSFE)
- R&D PROJECT BANK
- TECHNOLOGY MARKET (TECHMART)
- STI INDICATOR

Read more

# 6 INFORMATION MODULE

STI  
Indicator



STI  
ORGANISATION



TECHMART  
Technology Market



MyHRSTI  
Malaysian Human  
Resources in STI



NSFE  
National Scientific  
Facilities & Equipment



R&D Project  
Bank



KRSTE.my  
2.0



Elastic Search



Automatic Email  
Notification



Mass Upload



Web-based  
equipment  
& services booking



Dynamic Report



Live Update

# NATIONAL SCIENTIFIC FACILITY & EQUIPMENT (NSFE)

A national inventory database for scientific facilities and equipment available in government and private sector which serve for R&D or scientific purpose. This database used as a reference by various entities for policy making and to encourage sharing of resources among STI communities

## Search NSFE Info. By:

- Name of facilities
- Equipment
- Description
- Organisation Name
- Location

The screenshot shows the KRSTE.my Booking Form interface. The form is titled "Booking Form" and includes the following fields and sections:

- Name\***: UWARANI KRISHNAN
- Phone No\***: Enter your phone no...
- Email address\***: uwarani@mosti.gov.my
- Organization\***: KEMENTERIAN SAINS, TEKNOLOGI DAN INOVASI
- Booking Date\***: Enter your start date... to Enter your end date...
- Status**: (Empty field)
- No. of Sample**: Enter no of sample...
- Sample Description**: Enter your message...

Additional information on the left side of the form includes:

- You Are booking**: Blood Test Lab A1
- Contact Person**: Hamizah Binti Yaacob, hamizah@pocketdata.com.my, 0388880000
- Available Date**: A calendar for August 2020 with the 18th highlighted.

[www.krste.my](http://www.krste.my)

Booking via  
Mobile Apps or  
KRSTE.my  
system.

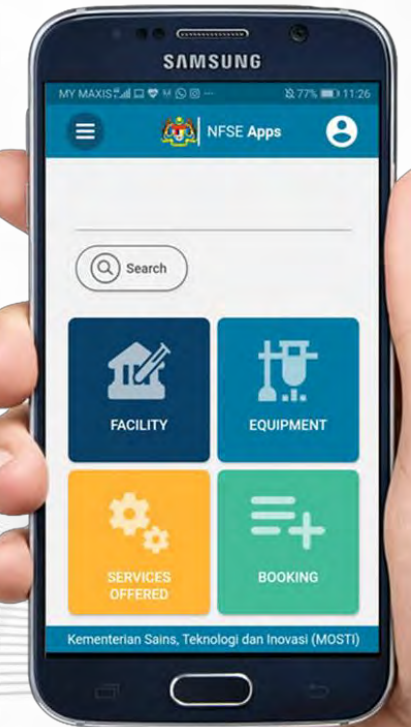
Download  
Apps Via:



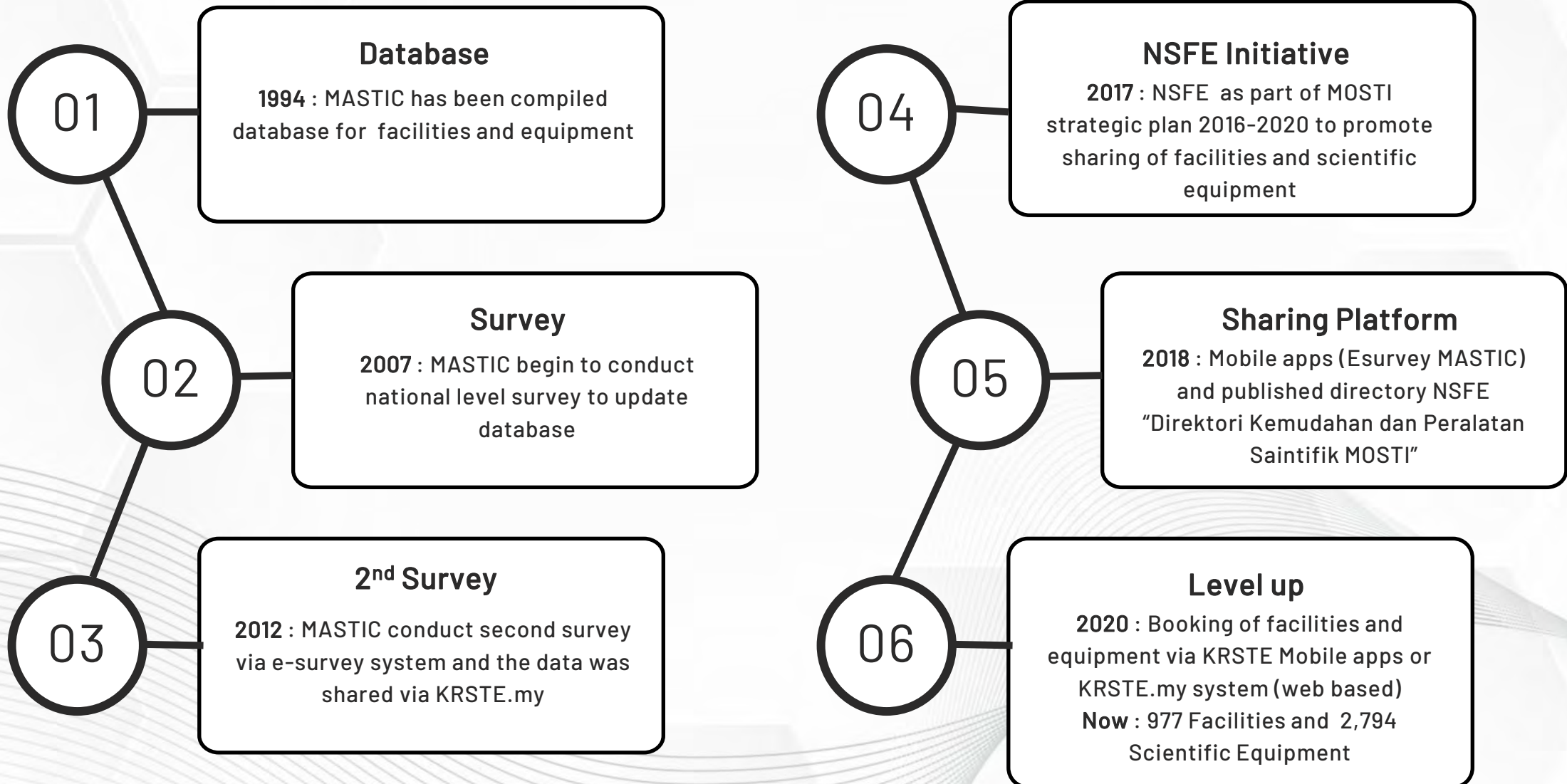
Play  
Store



App  
Store



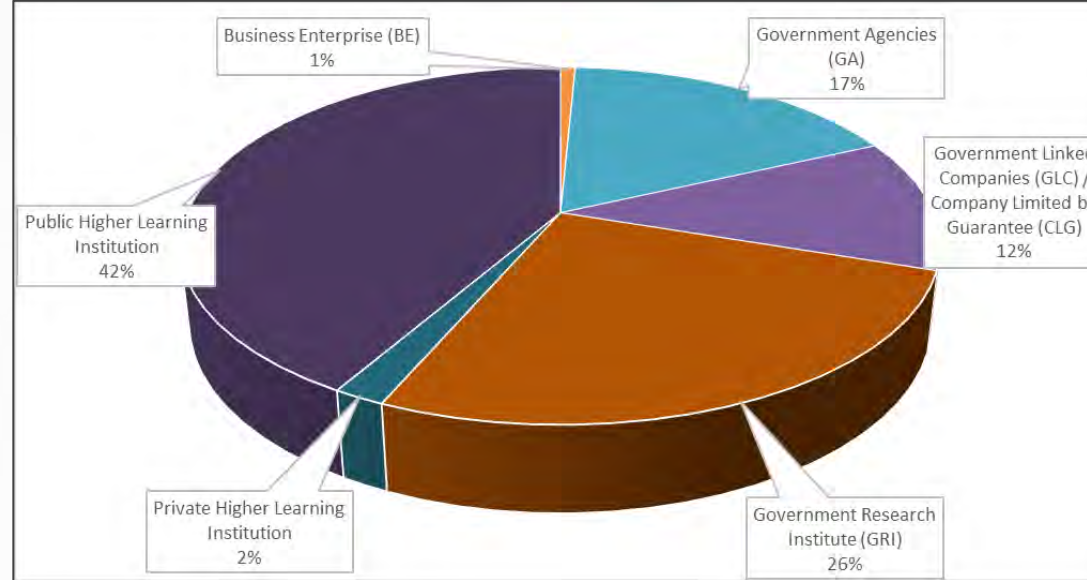
# NSFE TIMELINE



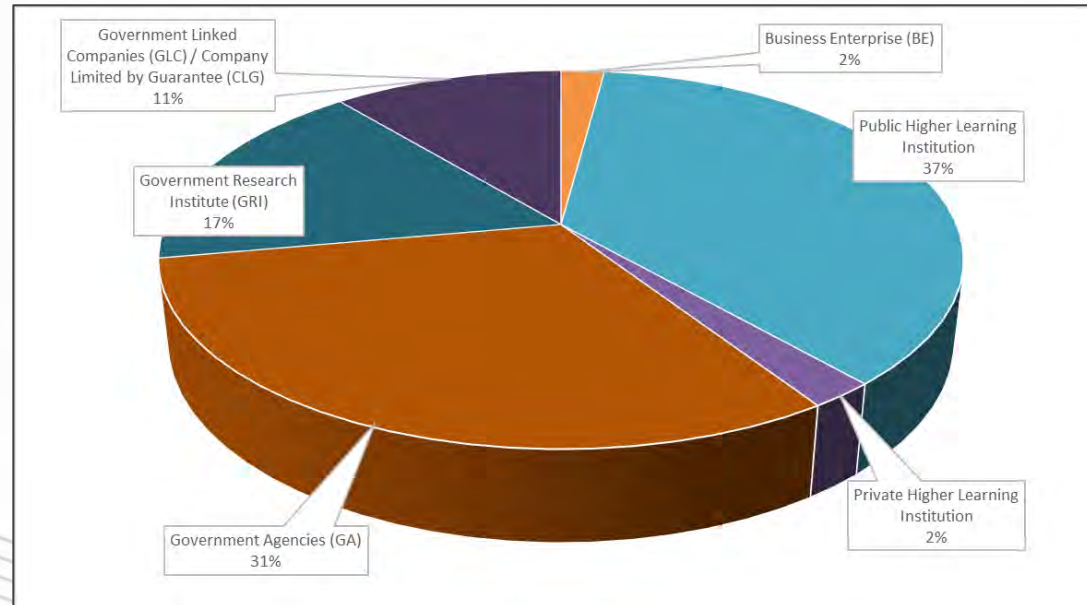
# STATISTIC OF NSFE RECORD BY TYPE OF ORGANISATION



**FACILITIES**  
(TOTAL RECORD= 977)



**EQUIPMENT**  
(TOTAL RECORD= 2,794)



# FACILITIES AND EQUIPMENT AVAILABLE FOR BOOKING



## FACILITIES

(TOTAL RECORD= 193)



### COASTAL AND ESTUARINE WAVE BASIN INSTITUT PENYELIDIKAN AIR KEBANGSAAN MALAYSIA (NAHRIM)

Multi Directional Wave Generation Wave Magnitude  
Measurement Coastal Hydrodynamic Physical Modelling  
Testing Coastal  
[Read More](#)



### Particle Size Analyzer Laboratory UNIVERSITI TEKNOLOGI MALAYSIA (UTM)

Provides analysis for measuring the particle size besides  
being able to measure electrophoretic mobility of proteins, ze  
[Read More](#)



### GAMMA GREENHOUSE (GGH) AGENSI NUKLEAR MALAYSIA (NUKLEAR MALAYSIA)

Facility For Induction Of Mutation In Plants And Other  
Biological Samples With Low Dose (Chronic) Radiation Over  
Period  
[Read More](#)



## EQUIPMENT

(TOTAL RECORD= 488)



### Zetasizer Nano Series (NANO- S) Nano Particle Size Analyzer PUSAT PENYELIDIKAN MINERAL, JABATAN MINERAL DAN GEOSAINS MALAYSIA (JMG-PPM)

To analysis nano particle size



### SURFACE AREA & POROSIMETRY ANALYZER UNIVERSITI MALAYSIA TERENGGANU (UMT)

• Determination of surface surface areas, pore sizes, shapes  
and distributions of material • Analysis - catalysts & act  
[Read More](#)



### X-Ray Diffraction (XRD) UNIVERSITI TEKNOLOGI MARA (UITM SHAH ALAM)

X-ray diffraction analysis (XRD) is a technique used in  
materials science to determine the crystallographic structure  
of  
[Read More](#)



# TREASURY CIRCULAR : PROCUREMENT OF SCIENTIFIC EQUIPMENT

1. Directive issued through treasury circular of “Pekeliling Perbendaharaan Malaysia PK 1.1 Punca Kuasa, Prinsip dan Dasar Perolehan Kerajaan (2020)”.
2. The circular as source of authority for MASTIC to collect information of facilities and scientific equipment in government agencies (GA).
3. GA should report and record any procurement of new technology or equipment in MASTIC database (NSFE database).

## ADDRESS

Malaysian Science & Technology Information  
Centre (MASTIC)  
Strategic Data & Foresight Technology Division  
Ministry of Science Technology & Innovation  
**Level 4, Block C5, Complex C**  
**Federal Government Administrative Centre**  
**62662 Putrajaya, Malaysia**

## WEB

[mastic.mosti.gov.my](http://mastic.mosti.gov.my)

## PHONE NUMBER

T: (603) 8885 8000

F: (603) 8889 2980

# THANK YOU