



active life  
VILLAGE

# Active Life Home – Technology Supported Living at Home

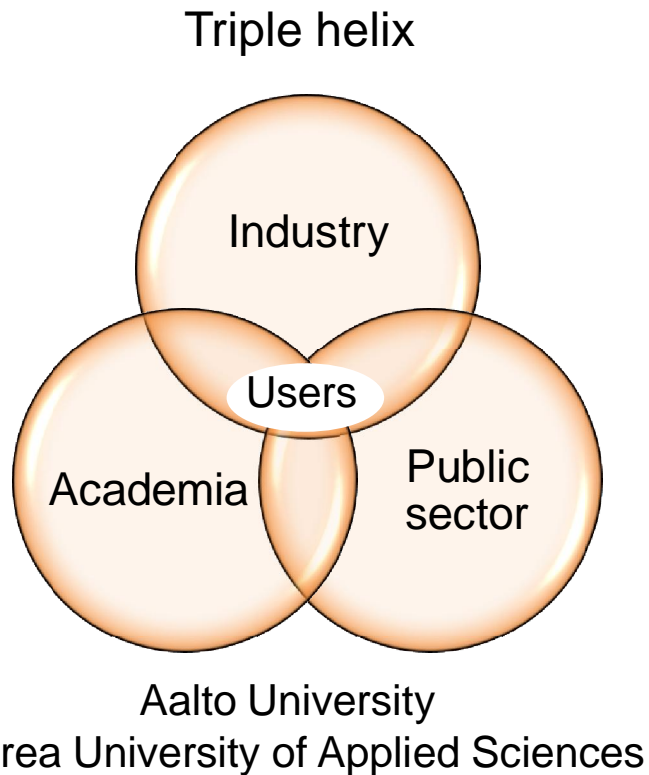
Olli Nuutila

13.12.2011

Matti Hämäläinen, Timo Itälä, Marko Nieminen, Aalto University  
Olli Nuutila, Pia Kiviharju, Raimo Miettinen, Active Life Village Ltd

# Active Life Village Ltd

**MISSION:** Create new wellbeing service innovations and business opportunities



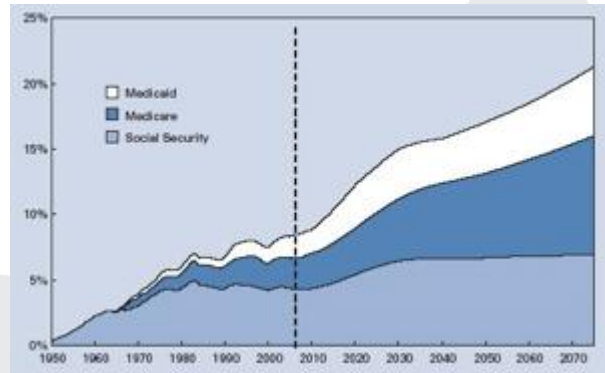
Active Life Village Espoo

# Future challenges of healthcare and wellbeing

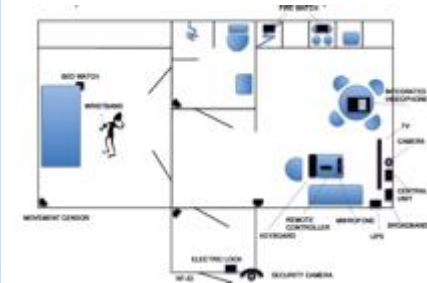
## Aging population



## Increasing costs



## How can we better utilize ICT?

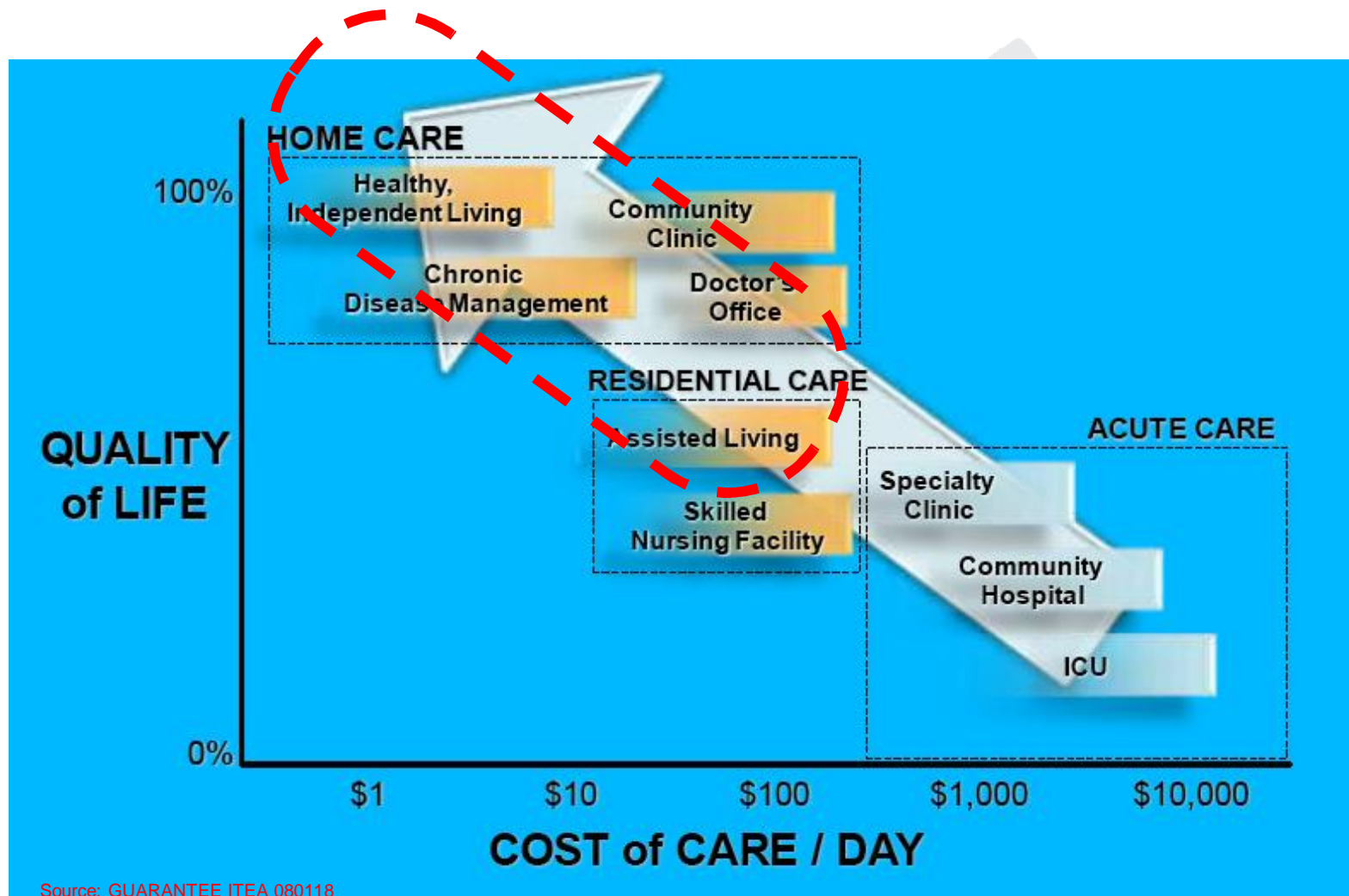


## Promotion of health by citizens' active role



Adapted from: Future of Health Care in the Year 2015 (Parliament of Finland, Committee for the Future)

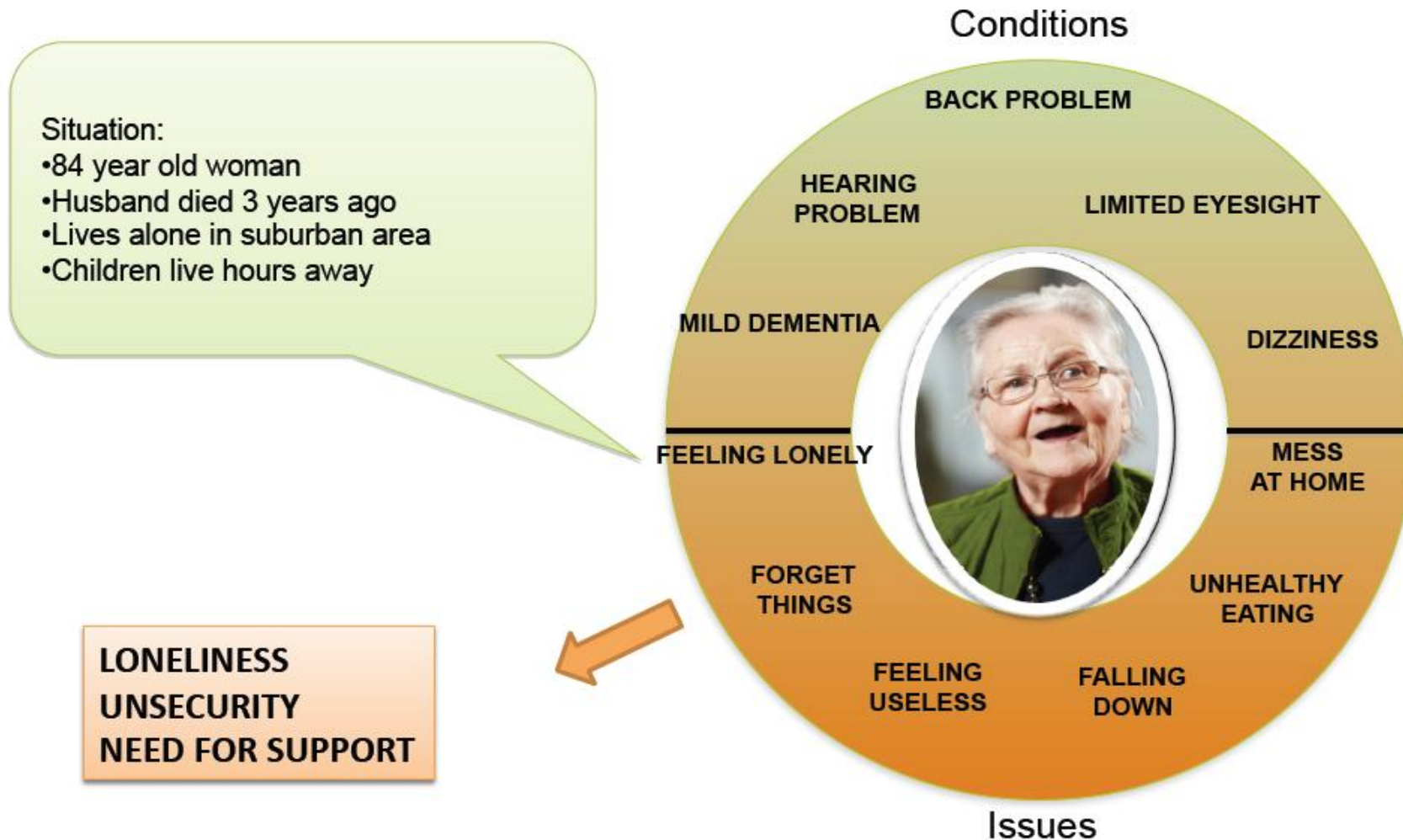
# Moving focus from hospitals to local care and to people and communities → Active Life at Home





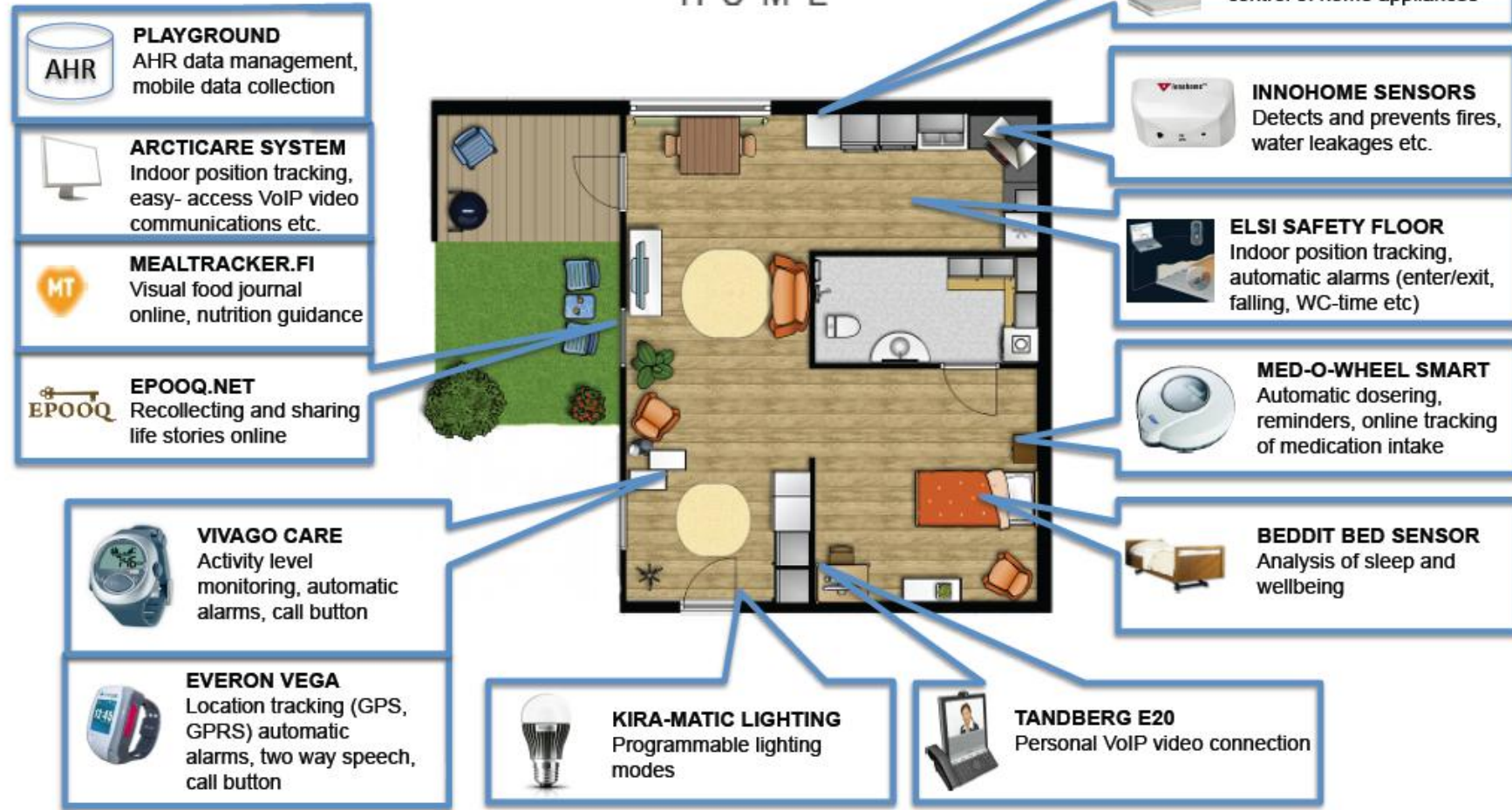
*Case:  
Active Life Home  
Service Concept*

# Active Life Home: addressing a variety needs



# active life

## HOME



**TANDBERG**

**KIRA-MATIC**

**FINSOR**

**Addoz**

**Vivago**

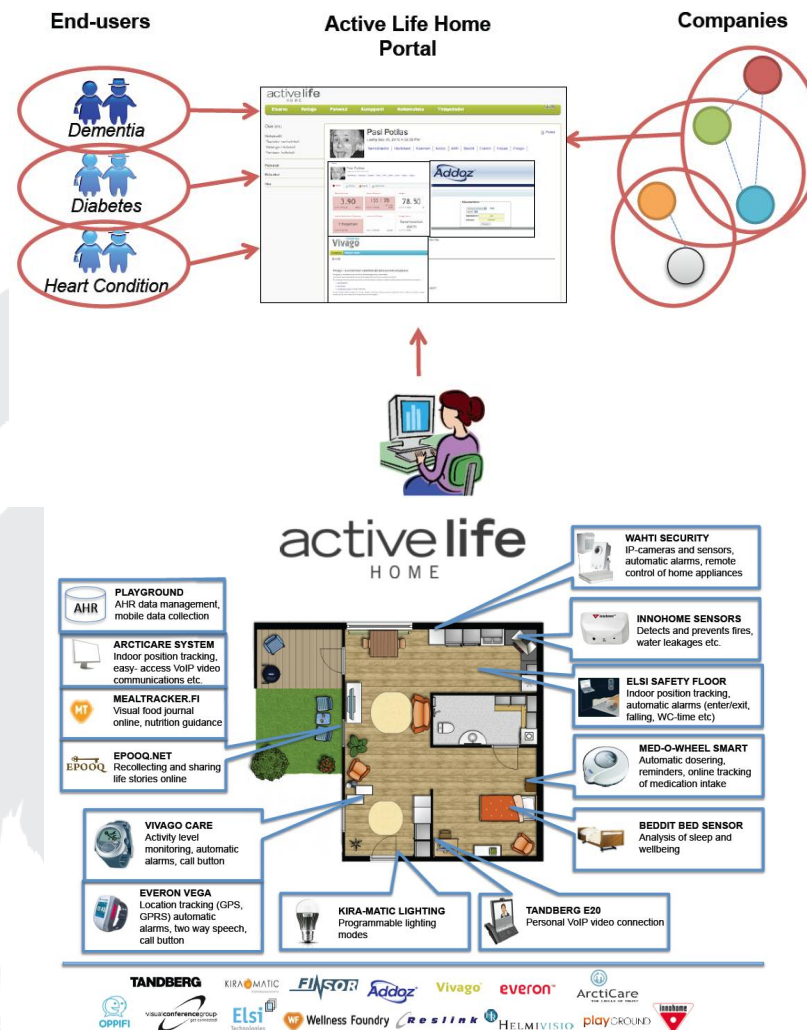
**everon**

**ArctiCare**  
THE CIRCLE OF TRUST



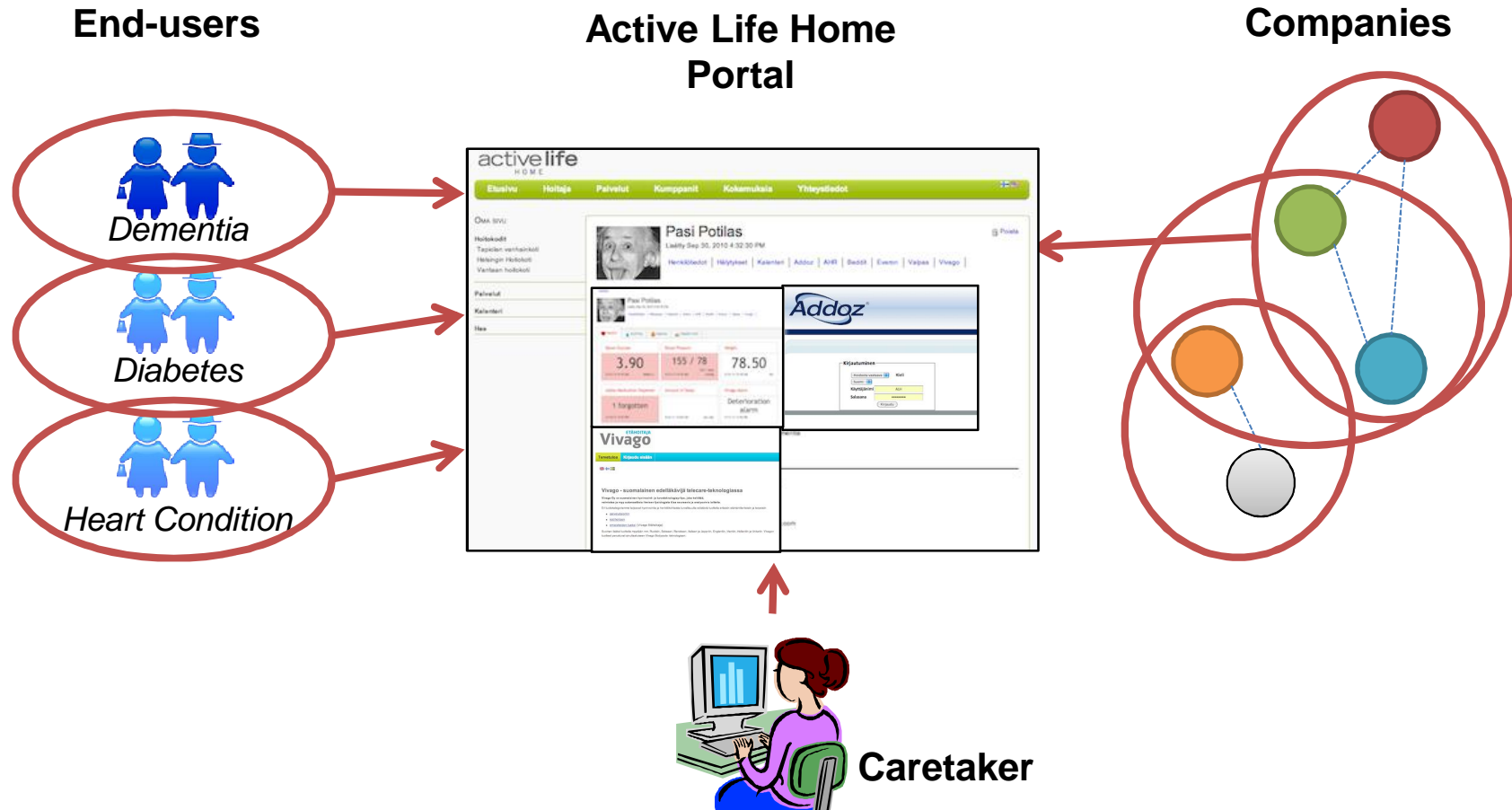
# Goals of Active Life Home

- Enhancing interoperability - designing and implementing an integration platform**
  - Data Integration to a shared Activity and Health Record database
  - Service operation and configuration through one user interface
  - Interaction of services inside the home
  
- Joint demonstration and marketing activities under the Active Life Home offering**
  - Demo apartment etc.





# Active Life Home Portal – matching needs and providers



# Active Life Home Portal

– enabling service composition

The screenshot displays the 'active life HOME' portal interface. At the top, a green navigation bar contains links for Home, Services, Partners, References, Contact, and Personal page, along with a search bar labeled 'Etsi sivustolta'. The left sidebar features a 'Personal page' section with links for Inhabitants, Statistics, and Settings, plus buttons for 'add new inhabitant' and 'compose services'. A help box in the sidebar asks for assistance with user or location management. The main content area is titled 'Service package composition' and shows the current inhabitant as Matti Virtanen. It lists the selected 'Dementia package' with a trash icon and buttons for 'Compose' and 'Cancel'. Below this, a section titled 'Service packages' includes a link to 'View all service classes' and a list of service items: Addoz Med-O-Wheel Smart, Beddit smart bed, Everon Vega, Innohome Stove Alarm & Stove Guard, and Vivago Ultra. At the bottom of this section, it indicates 'Selected.' and provides 'Cancel' and 'Edit package' options.

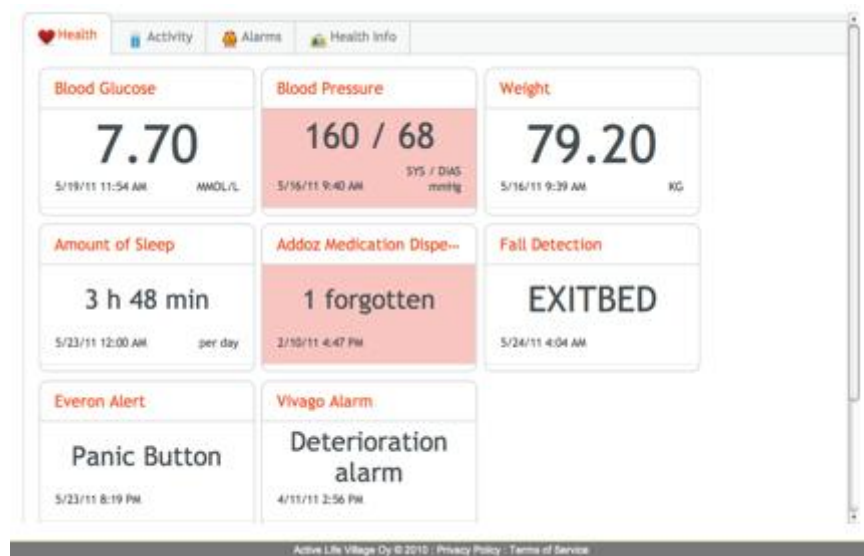
# Active Life Home:

addressing the current problem of different products / services provided as separate services



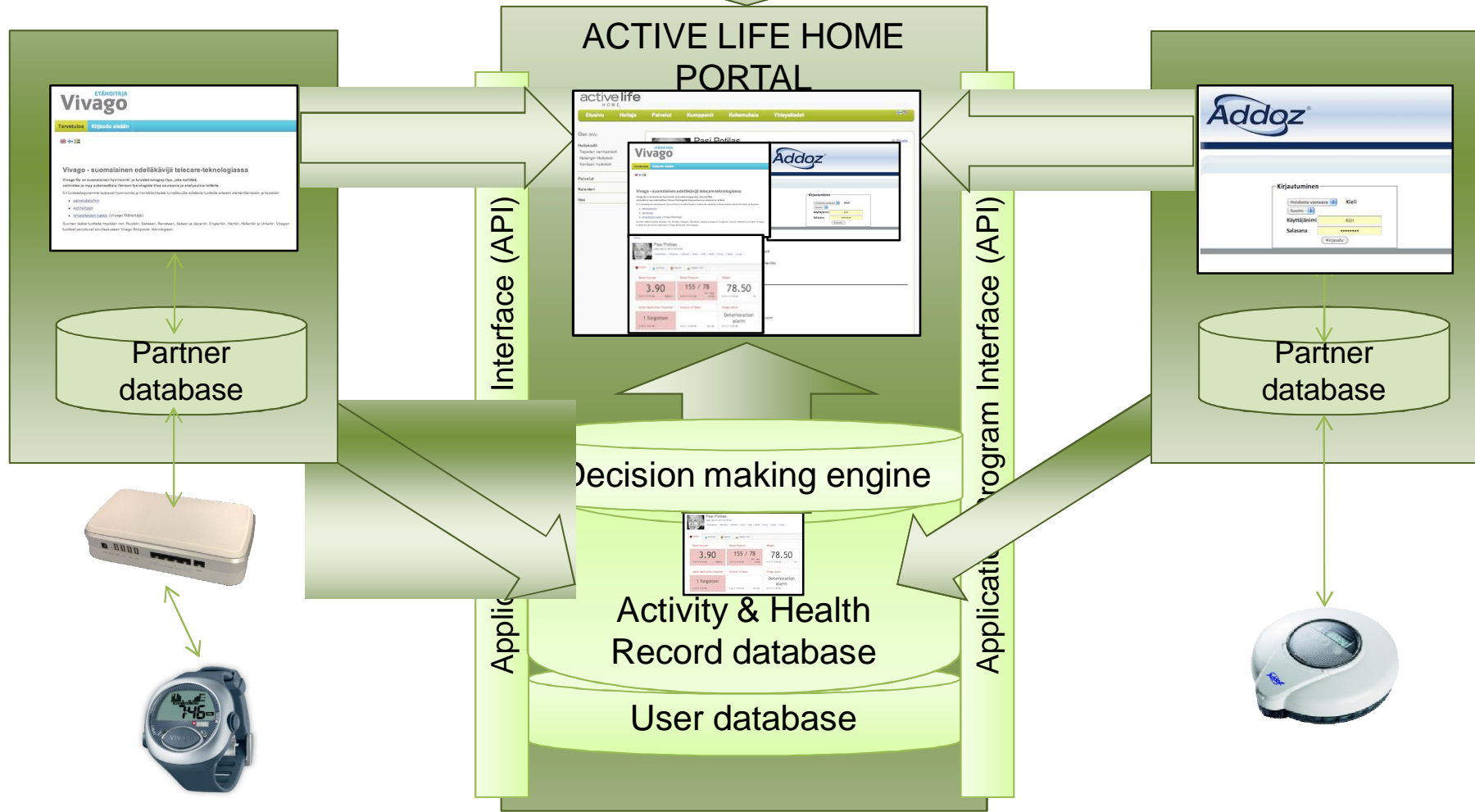
# Active Life Home: making it easy to

- a) use the variety of products together
- b) combine information from different sources to add value
- c) provide new opportunities

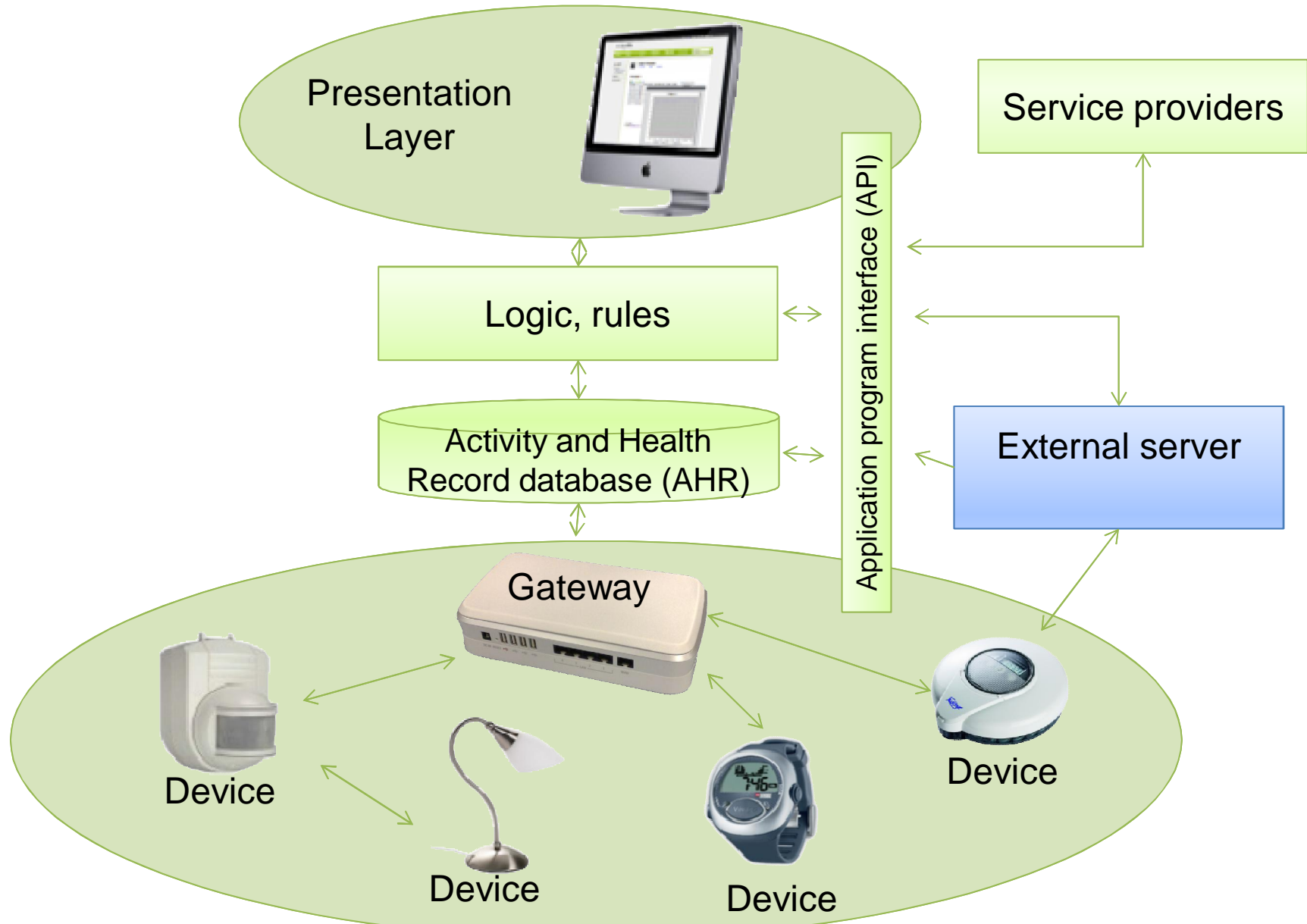




SINGLE-SIGN ON



# Layer model of ALH

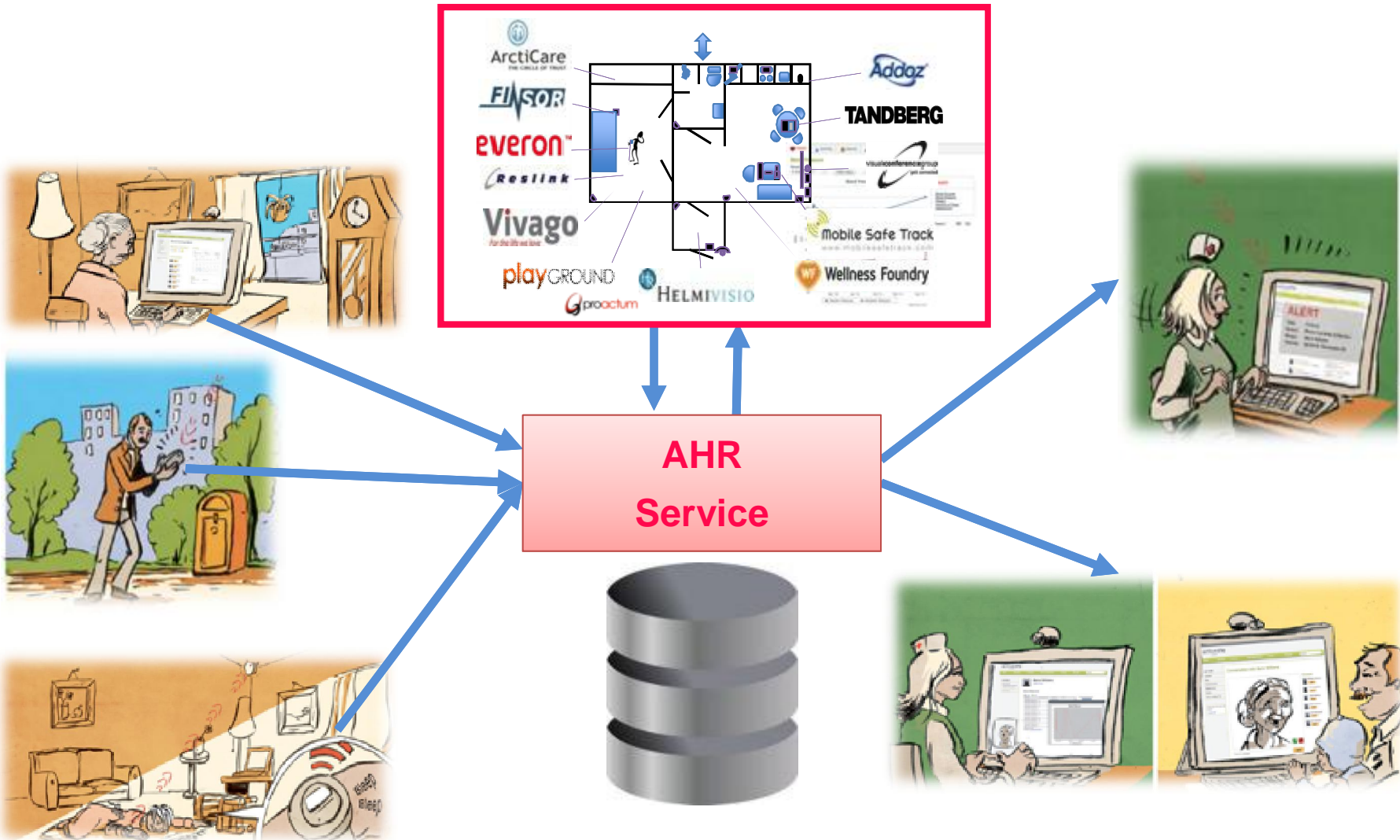


# Personal Data - Activity and Health Record (AHR)

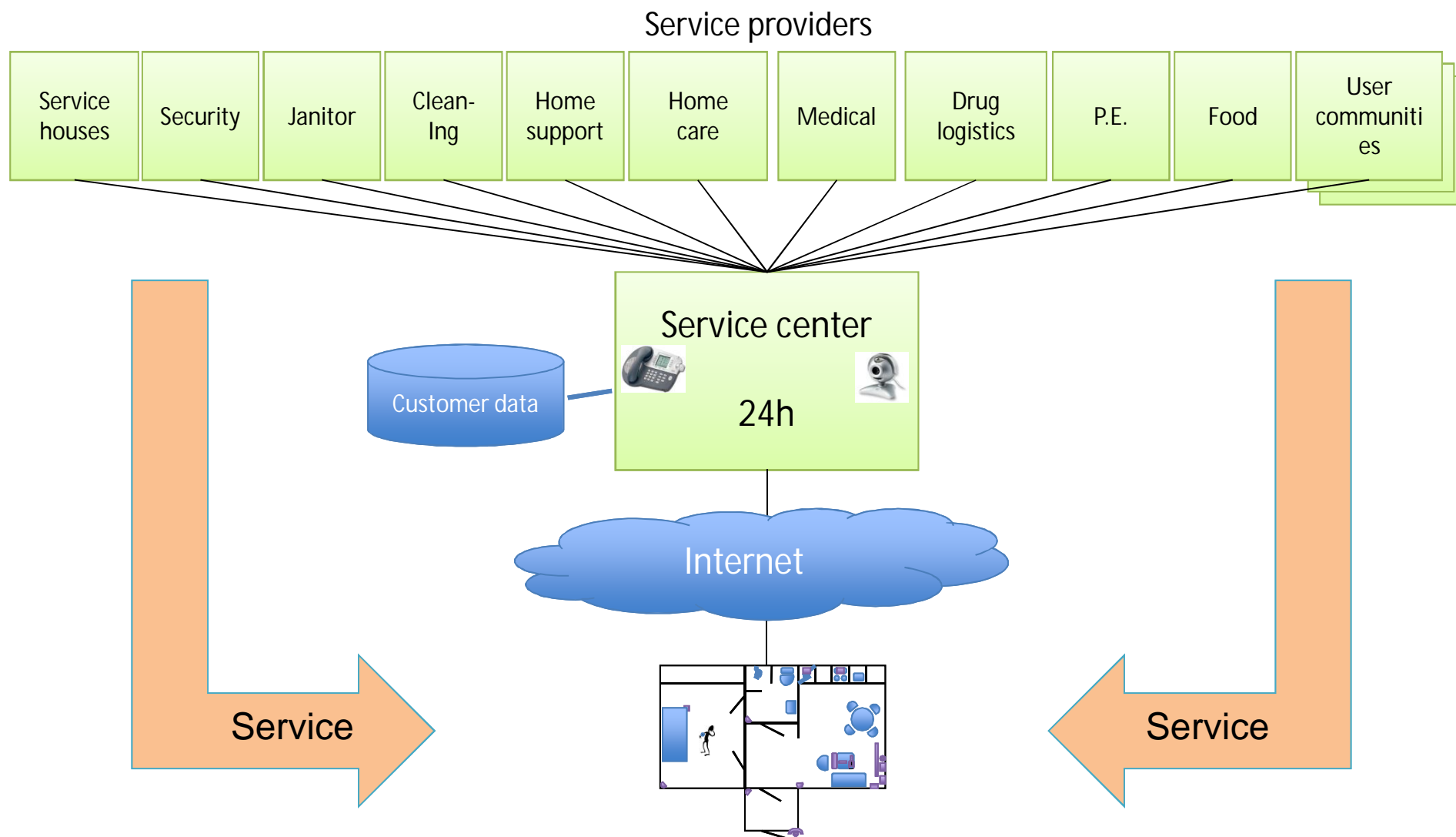
Collect & record

Manage & visualize

Notify, alert & share



# Active Life Home is a basis for Service System to support independent living





# Active Life Home concept fulfills the elements required by senior citizens to live at home safely



## Physical home security

- Fire prevention, detection and alarm
- Guarding, Access Control



## Physiological monitoring, alarm and help

- Health monitoring
- Medication monitoring
- Eating, sleeping and other daily routine monitoring



## Social needs

- Contacts with relatives and friends
- Hobbies
- Recreation
- Studying, research, etc.

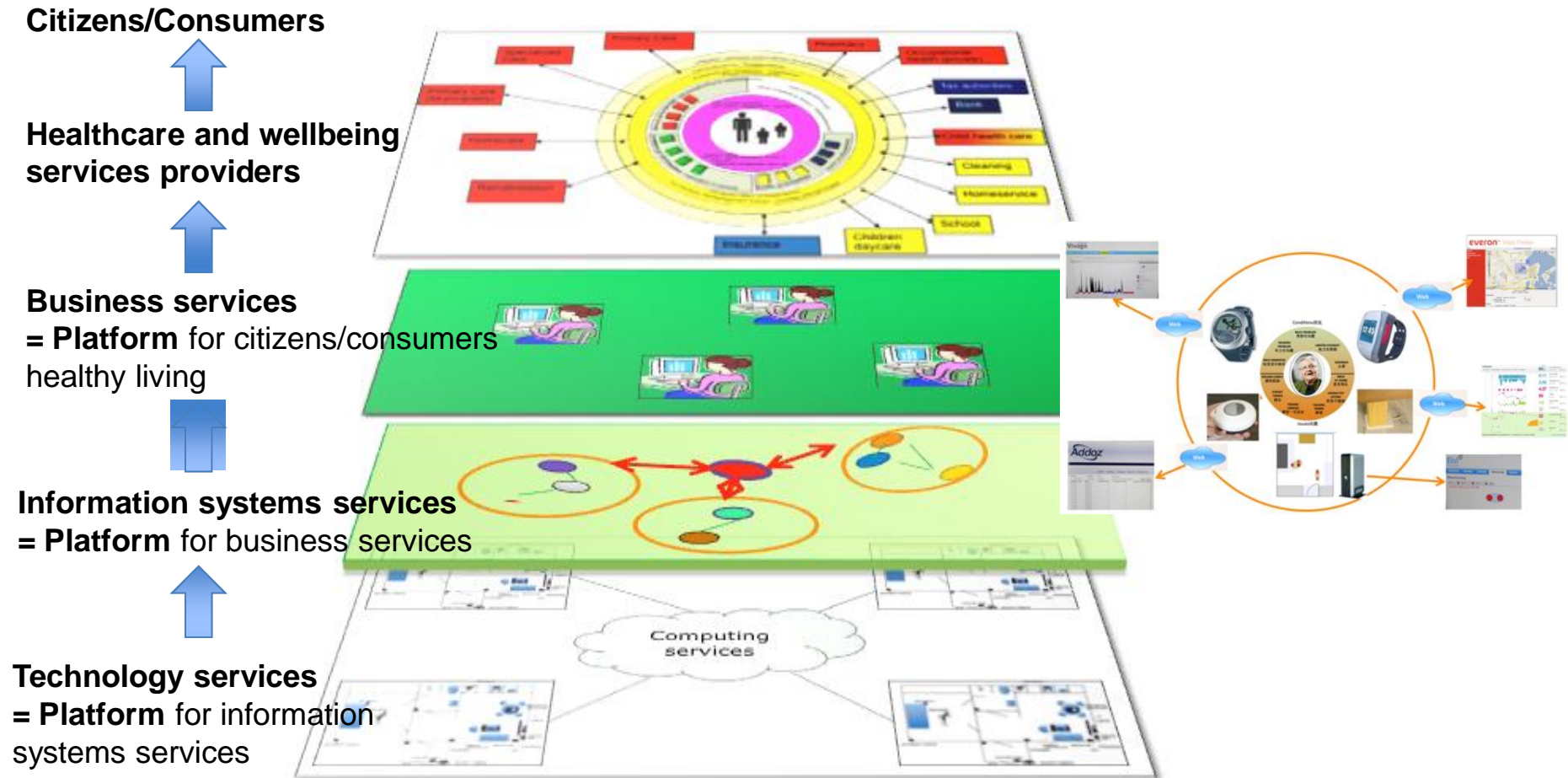


## Services

- Medical services
- Food supply
- Cleaning, snow work, jne.
- Personal hygiene



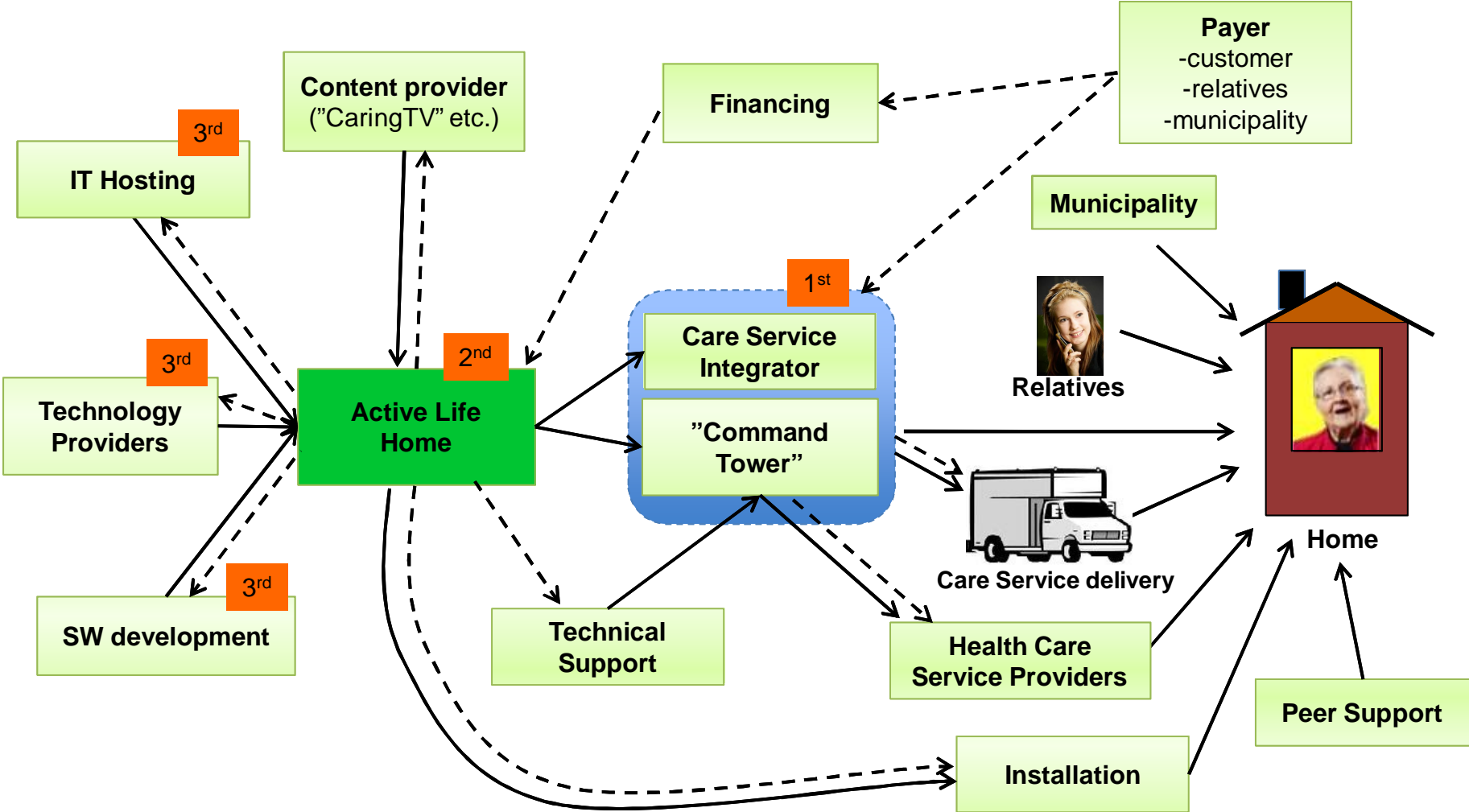
# We have a layered approach to define the services based on Active Life Home solution



# Example of value network

1<sup>st</sup> Support Level

Service/Product Flow  
 Money Flow





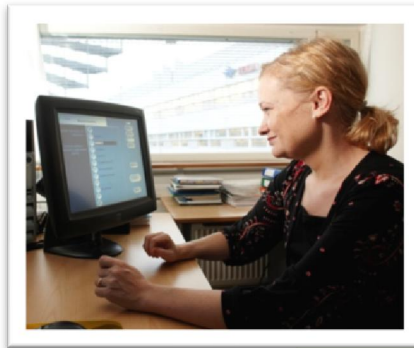


# Active Life Home BENEFITS



## For the relatives

- Awareness of safety
- Peace of mind
- Frequent contacting with the person

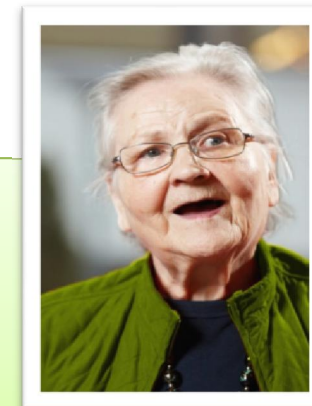


## For the society

- Cost savings
- Better resource utilisation
- Better service

## For the person

- Safe living at home
- Support available if needed
- Connected to the society and social networks
- Improved healthiness





active life  
VILLAGE

Better Life, at Home

[oli.nuuttila@activelife.fi](mailto:oli.nuuttila@activelife.fi)