

Project Goals

Problems to be solved

- The demented elderly's will is hardly reflected in medical practices toward him/her.
- ⇒ Causing either of undertreatment or overtreatment
 - ⇒ His/her family or guardian bear emotional strain in making decision on behalf of him/her on the other hand.

R&D Target

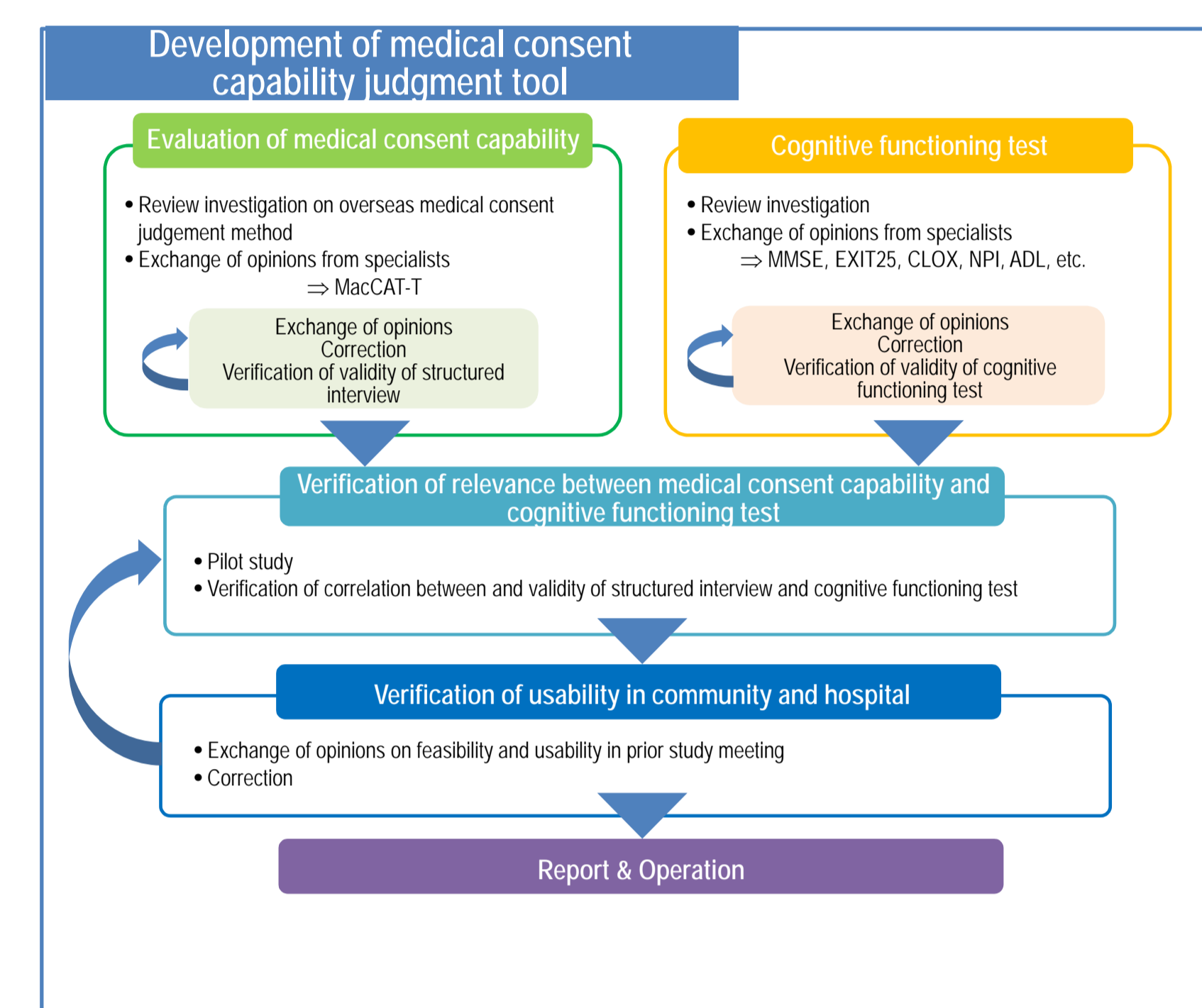
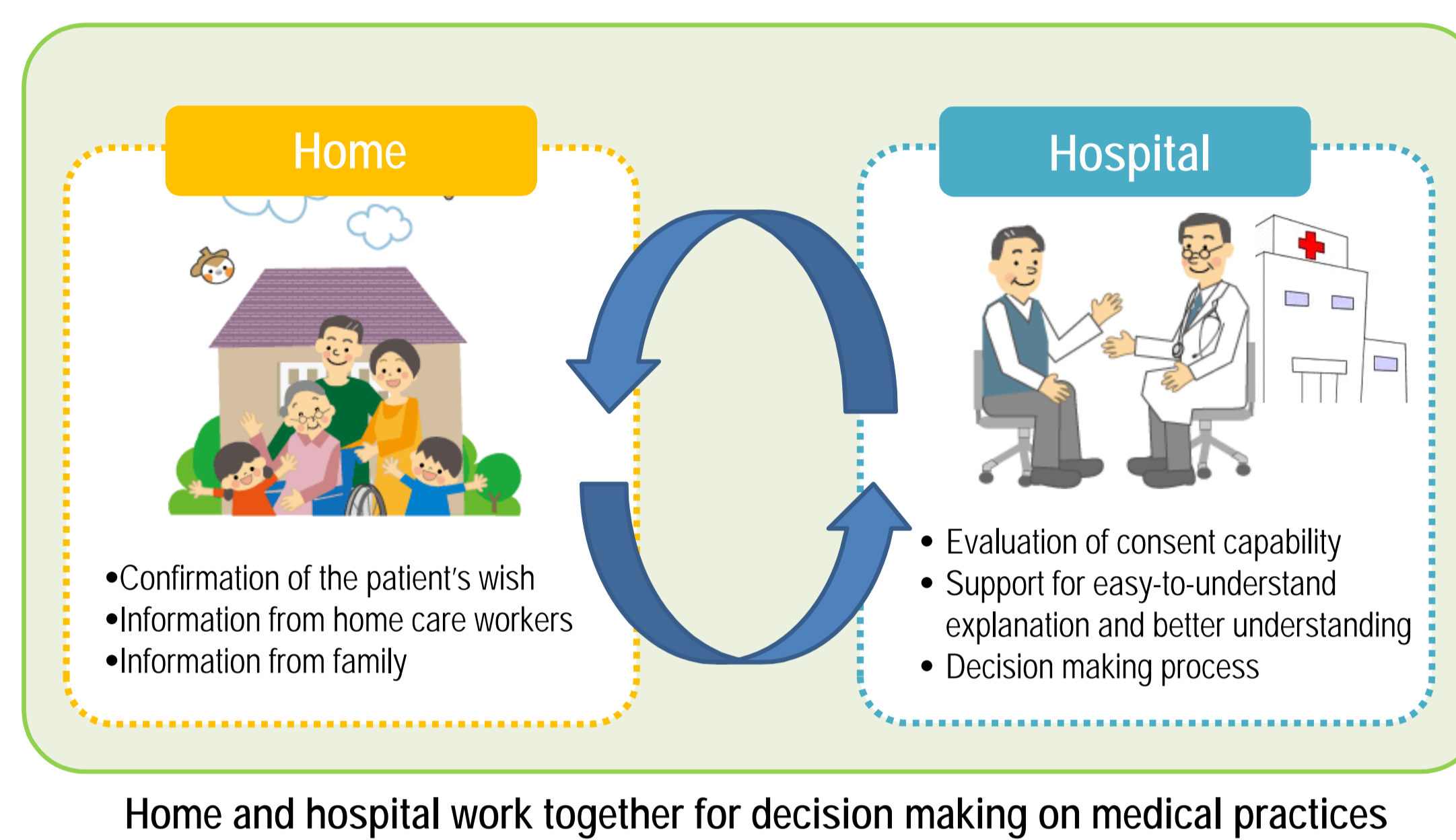
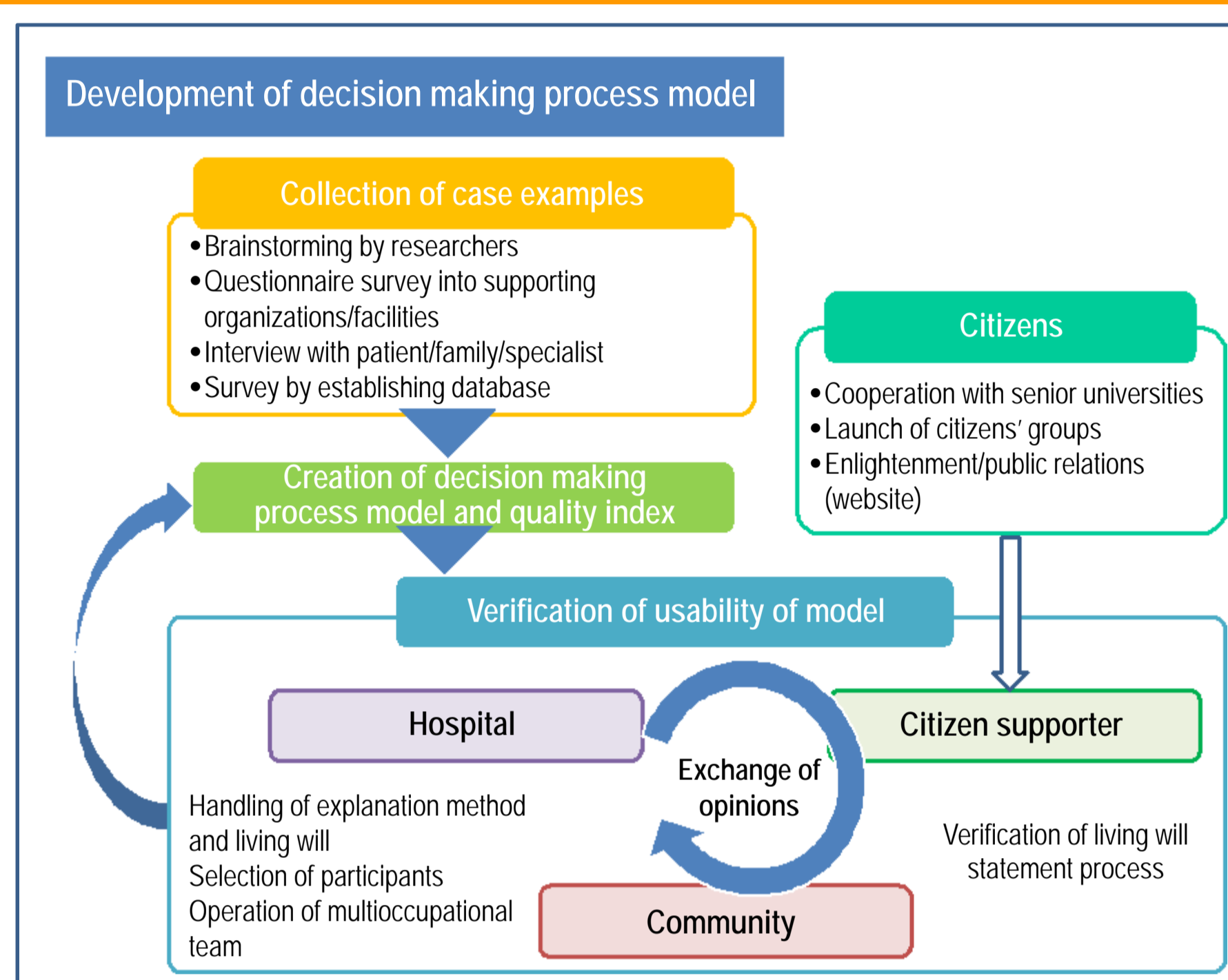
- “Medical consent capability evaluation tool” to appropriately evaluate the consent capability of the demented elderly.
- Practical “decision making process model” to provide treatment without delay based on discussions between the elderly and his/her family and a multioccupational team, according to the level of his/her consent capability
 - ⇒ Summarize to make a manual for specialists and a guidebook for the elderly and his/her family.
 - ⇒ Contribute to an improvement of medical and welfare specialists' skill to read the elderly's will.

The social model we aim at

- Establish the “support system for making a medical choice with community-based care and multioccupational cooperation” for the purpose of respecting the demented elderly's decision.
- ⇒ Develop a tool to connect a community with a hospital and to enhance the quality of support

Project implementation

Project overview



Target communities / R & D Structure

[Target communities] Kyotango City, Kamigyo Ward and Iwakura area in Sakyo Ward, Kyoto City in Kyoto Pref.

[Major participants] Kyoto Prefectural University of Medicine (physicians, nurses and psychotherapists), Chiba University (legal experts), Hanazono University (neuropsychology specialists), the public health center of Tango, Kyoto Pref., Adult Guardian Center Legal Support (judicial scrivener), Alzheimer's Association Japan (people concerned), Kyotango City Yasaka Hospital (medical institution)

Project achievements and future prospects

Project achievements

1. Development of decision making process relating to medical consent
2. Development of medical consent capability judgment tool
3. Development of decision making support manuals

- ◇ Able to make informed consent in medical situation transparent and to contribute to treatment of patient and to overtreatment prevention, etc.
- ◇ Able to judge medical consent capability using simple cognitive functioning test and to contribute to prevention of overtreatment and of withholding of treatment.
- ◇ Able to contribute to decision making support in each area by utilizing manuals for community residents, community supporters and medical service workers.

Developed guide books



Future developments and prospects

Utilization in trainings

Name of training	Target trainee
2014 Dementia support nurse training (January 19, 2015)	Nurses
2014 Dementia care comprehensive training (December 19, 2014)	Nurses
Kyoto Shihoushoshi Lawyer's Association (October 24, 2014)	Judicial scriveners
2014 Kyoto City's guardian training course (October 17, 2014)	General citizens
Kyotango City's caring family gathering (September 2, 2014)	Caring families
Otokuni dementia forum (June 28, 2014)	Medical and welfare specialists

Activities in Kyotango City to familiarize general citizens with the ideas

- ◆ Aiming to establish the ideal ordinance

Collaboration with lawyers

- ◆ Adult Guardian Center Legal Support Symposium "Treatment as I wish - Supporting patients to make a decision in medical practices"
- ◆ Presentation at the Human Rights Convention by Japan Federation of Bar Associations

Books summarizing project outcomes