

Mandatory Completion of Research Ethics Education Program

JST requires researchers participating in the project to complete educational materials on research ethics. Research institutions are requested to ensure that the eligible participants successfully complete the program.

Examples of Research Ethics Education Programs

- "eAPRIN" provided by the Association for the Promotion of Research Integrity
- "eL CoRE" provided by the Japan Society for the Promotion of Science
- Japan Society for the Promotion of Science "For the Sound Development of Science - The Attitude of a Conscientious Scientist"
- Japan Agency for Medical Research and Development "Responsible Research Practices to Learn from Cases - A Casebook to Instill Awareness and Learning"
- Japan Agency for Medical Research and Development "A Compendium of Near-Miss Incidents Related to Research Integrity"
- Other research ethics education programs and training deemed equivalent to the above by your research institution.

(If the research institution deems it equivalent, the video material "Gaps in Ethics" provided by JST is also acceptable.)

Please note that in the event of non-compliance with the training requirements, all or part of the commissioned research funds will be suspended.

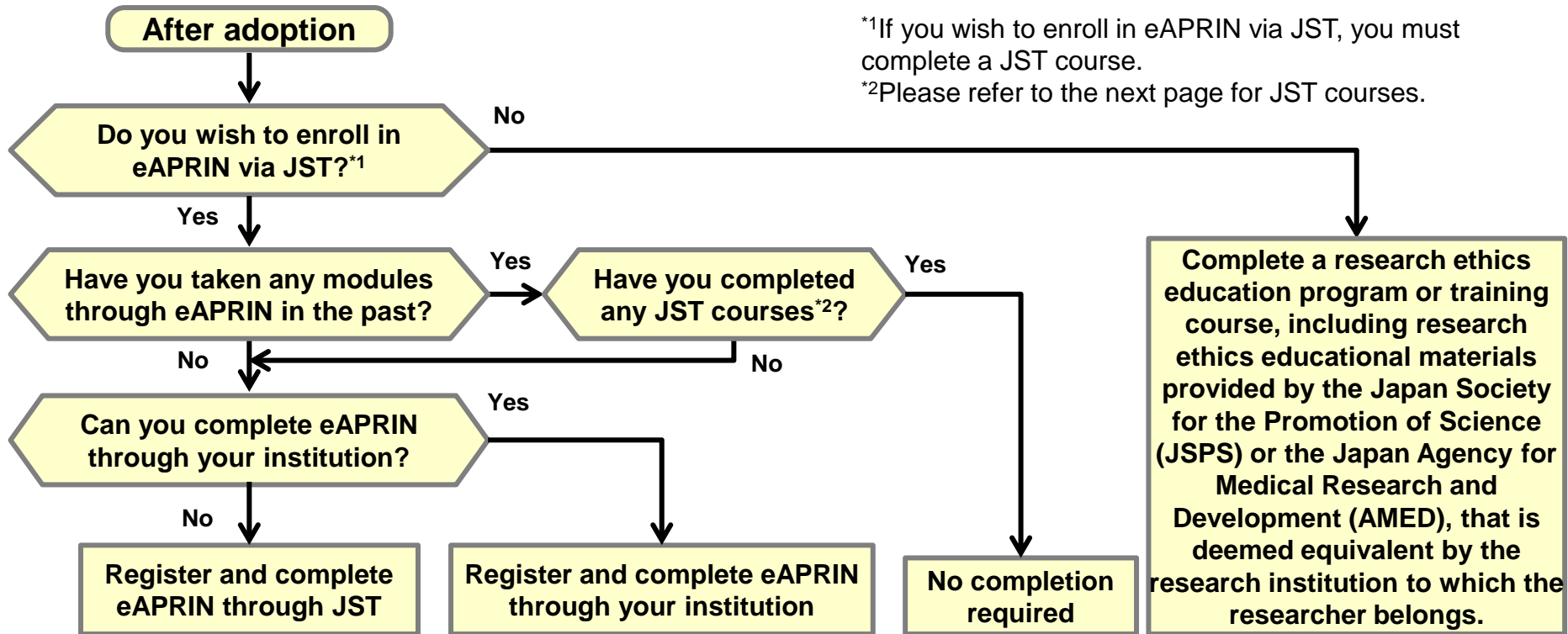
Procedures for Completing Research Ethics Education Program via JST

- If you have already completed a research ethics education program at your institution, there is no need to complete it via JST.
- If you wish to enroll in eAPRIN via JST, the research representative is required to complete the necessary procedures with the respective project staff.

After adoption

*1If you wish to enroll in eAPRIN via JST, you must complete a JST course.

*2Please refer to the next page for JST courses.



If you have registered for eAPRIN via JST, you will receive a notification email from the Research Integrity Division of JST with your username and program information.

(Reference)

Information on the eAPRIN JST courses

Features

- Students can take the course one module at a time, fully online. It is available 24 hours a day. Anytime, anywhere learning style.
- Prepared under the MEXT's Program for Promoting Inter-University Collaborative Education "Standardization of Code of Conduct Education and National Development of Educational Systems for the Development of Researchers" and the NPO Japan-US Medical Education Consortium, based on research and ethics materials used in the United States as a framework and in accordance with Japanese laws, guidelines and other matters.

JST-Designated Required Modules

[Select one of the three courses to take]

<1. JST Course (1) (Biomedical) >

Required modules

1. Responsible Conduct of Research
2. Research Misconduct
3. Data Handling
4. Rules for Collaborative Research
5. Authorship
6. What is plagiarism?
7. Managing Public Research Funds

<2. JST Course (2) (Engineering) >

Required modules

1. Research Misconduct
2. Ethical Issues in the Management of Data in Engineering Research
3. Responsible Authorship
4. Ethical Issues in the Peer Review and Publication of Engineering Research
5. Collaborative Research in Engineering Fields
6. Whistleblowing and the Obligation of Researchers and Engineers to Protect the Public
7. Managing Public Research Funds

<3. JST Course (3) (Humanities) >

Required modules

1. Misconduct in Research Activities
2. Plagiarism in the Field of Humanities and Social Sciences
3. Collaborative Research and Authorship
4. Peer Review and Conflicts of Interest
5. Managing Public Research Funds

- Available in Japanese and English
- Each course takes about 3-4 hours to complete all the required modules. (Each module takes about 30-40 minutes to complete.)
- Completion of the "Responsible Conduct of Research (Digest Version)" is not sufficient. You must complete one of the above courses designated by JST even if you completed the "digest" course.
- The above module names are current as of January 2024.

[Reference] List of eAPRIN materials (<https://www.aprin.or.jp/form0/modulelist.pdf>)